

**PAB583Hu01**

**Polyclonal Antibody to Cytohesin 2 (CYTH2)**

**Organism Species: Homo sapiens (Human)**

***Instruction manual***

FOR IN VITRO USE AND RESEARCH USE ONLY

NOT FOR USE IN CLINICAL DIAGNOSTIC PROCEDURES

---

---

9th Edition (Revised in Jul, 2013)

## **[ PRODUCT INFORMATION ]**

**Immunogen:** CYTH2, Human

**Clonality:** Polyclonal

**Host:** Rabbit

**Immunoglobulin Type:** IgG

**Purification:** Affinity Chromatography.

**Applications:** WB, ICC, IHC-P, IHC-F, ELISA

**Concentration:** 200µg/mL

**UOM:** 100µg

## **[ IMMUNOGEN INFORMATION ]**

**Immunogen:** Recombinant CYTH2 (Met1~Arg390) expressed in *E.coli*.

**Accession No.:** RPB583Hu01

**Sequence:** The target protein is fused with two N-terminal Tags, His-tag and T7-tag and its sequence is listed below.

MGSSHHHHHH SSSLVPRGSH MASMTGGQQM GRGSEF- MEDGVYEPPD LTPEERMELE  
NIRRRKQELL VEIQRLEEL SEAMSEVEGL EANEKSKTLQ RNRKMMAMGRK KFNMDPKKGI  
QFLVENELLQ NTPPEIARFL YKGEGLNKTA IGDYLGREE LNLAVLHAFV DLHEFTDLNL  
VQALRQFLWS FRLPGEAQKI DRMMEAFQYR YCLCNPVGFQ STDTCYVLSF AVIMLNTSLH  
NPNVRDKPGL ERFVAMNRGI NEGGDLPEEL LRNLDSIRN EPFKIPEDDG NDLTHTFFNP  
DREGWLLKLG GGRVKTWKRR WFILTDNCLY YFEYTTDKEP RGIIPLENLS IREVDDPRKP  
NCFELYIPNN KGQLKACKT EADGRVVEGN HMYRISAPT QEEKDEWIKS IQAAVSVDPF  
YEMLAARKKR

## **[ ANTIBODY SPECIFICITY ]**

The antibody is a rabbit polyclonal antibody raised against CYTH2. It has been selected for its ability to recognize CYTH2 in immunohistochemical staining and western blotting.

## **[ APPLICATIONS ]**

Western blotting: 1:100-400

Immunocytochemistry in formalin fixed cells: 1:100-500

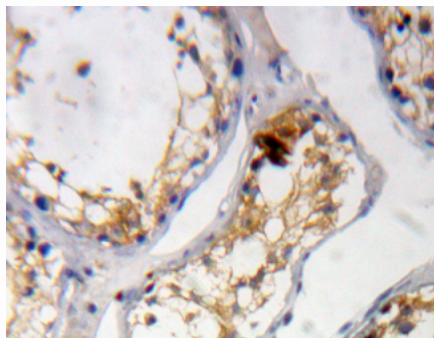
Immunohistochemistry in formalin fixed frozen section: 1:100-500

Immunohistochemistry in paraffin section: 1:50-200

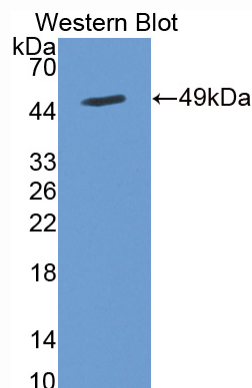
Enzyme-linked Immunosorbent Assay: 1:100-200

Optimal working dilutions must be determined by end user.

## [ IMAGES ]



Used in DAB staining on formalin fixed  
paraffin-embedded Testis tissue



Used in Western Blot, Sample:  
Recombinant CYTH2, Human

## [ CONTENTS ]

**Form & Buffer:** Supplied as solution form in PBS, pH7.4, containing 0.02% NaN<sub>3</sub>, 50% glycerol.

## [ QUALITY CONTROL ]

**Content:** The quality control contains recombinant CYTH2 (Met1~Arg390) disposed in loading buffer.

**Usage:** 10uL per well when 3,3'-Diaminobenzidine(DAB) as the substrate.  
5uL per well when used in enhanced chemiluminescent (ECL).

**Note:** The quality control is specifically manufactured as the positive control. Not used for other purposes.

**Loading Buffer:** 100mM Tris(pH8.8), 2% SDS, 200mM NaCl, 50% glycerol, BPB 0.01%, NaN<sub>3</sub> 0.02%.

## [ STORAGE ]

Store at 4°C for frequent use. Stored at -20°C to -80°C in a manual defrost freezer for one year without detectable loss of activity. Avoid repeated freeze-thaw cycles.