

PAA494Hu01

Polyclonal Antibody to Protein Kinase C Theta (PKC θ)

Organism Species: Homo sapiens (Human)

Instruction manual

FOR IN VITRO USE AND RESEARCH USE ONLY

NOT FOR USE IN CLINICAL DIAGNOSTIC PROCEDURES

9th Edition (Revised in Jul, 2013)

[PRODUCT INFORMATION]

Immunogen: PKC θ , Human

Clonality: Polyclonal

Host: Rabbit

Immunoglobulin Type: IgG

Purification: Affinity Chromatography.

Applications: WB, ICC, IHC-P, IHC-F, ELISA

Concentration: 200 μ g/mL

UOM: 100 μ g

[IMMUNOGEN INFORMATION]

Immunogen: Recombinant PKC θ (Phe380~Phe634) expressed in *E.coli*.

Accession No.: RPA494Hu01

Sequence: The target protein is fused with two N-terminal Tags, His-tag and GST-tag and its sequence is listed below.

MSPILGYWKI KGLVQPTRL L LEYLEEKYEE HLYERDEGDK WRNKKFELGL EFPNLPYYID
GDVKLTQSMA IIRYIADKHN MLGGCPKERA EISMLEGAVL DIRYGVSR IA YSKDFETLKV
DFLSKLP EML KMFEDRLCHK TYLNGDHVTH PDFMLYDALD VVLYMDPMCL DAFP KLVCFK
KRIEAI PQID KYLKSSKYIA WPLQG WQATF GGGDHPPKSD GSTSGSGHHH HHSAGLVPR
GSTAIGMKET AAKFERQHM DSPDLGTGGG SGIEGRGSMG YRGS-F ILHKMLGKGS
FGKVFLAEFK KTNQFFAIKA LK KDVVLMDD DVECTMVEKR VLSLAW EHPF LTHMFCTFQT
KENLFFVMEY LNGGDL MYHI QSCHKFDLSR ATFYAAE IIL GLQFLH SKGI VYRDLKLDNI
LLDKDGH IKI ADFGMCKENM LGDAKTNTFC GTPDYIAPEI LLGQKYNHSV DWWSFGVLLY
EMLIGQSPFH GQDEEELFHS IRMDNPFYPR WLEKEAKDLL VKL FVREPEK RLGVRGDIRQ
HPLF

[ANTIBODY SPECIFICITY]

The antibody is a rabbit polyclonal antibody raised against PKC θ . It has been selected for its ability to recognize PKC θ in immunohistochemical staining and western blotting.

[APPLICATIONS]

Western blotting: 1:100-400

Immunocytochemistry in formalin fixed cells: 1:100-500

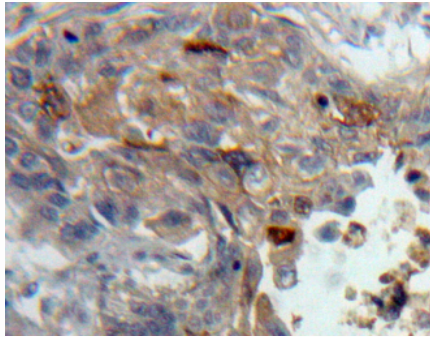
Immunohistochemistry in formalin fixed frozen section: 1:100-500

Immunohistochemistry in paraffin section: 1:50-200

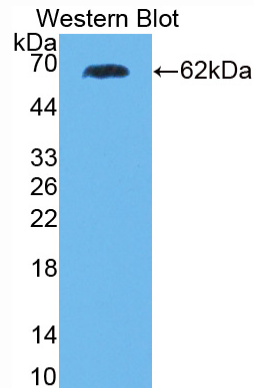
Enzyme-linked Immunosorbent Assay: 1:100-200

Optimal working dilutions must be determined by end user.

[IMAGES]



Used in DAB staining on formalin fixed
paraffin-embedded Lung tissue



Used in Western Blot, Sample:
Recombinant PKC ζ , Human

[CONTENTS]

Form & Buffer: Supplied as solution form in PBS, pH7.4, containing 0.02% NaN₃, 50% glycerol.

[QUALITY CONTROL]

Content: The quality control contains recombinant PKC ζ (Phe380~Phe634) disposed in loading buffer.

Usage: 10uL per well when 3,3'-Diaminobenzidine(DAB) as the substrate.
5uL per well when used in enhanced chemiluminescent (ECL).

Note: The quality control is specifically manufactured as the positive control. Not used for other purposes.

Loading Buffer: 100mM Tris(pH8.8), 2% SDS, 200mM NaCl, 50% glycerol, BPB 0.01%, NaN₃ 0.02%.

[STORAGE]

Store at 4°C for frequent use. Stored at -20°C to -80°C in a manual defrost freezer for one year without detectable loss of activity. Avoid repeated freeze-thaw cycles.