

PAR982Hu01

Polyclonal Antibody to Cancerous Inhibitor Of PP2A (CIP2A)**Organism Species: Homo sapiens (Human)****Instruction manual**

FOR IN VITRO USE AND RESEARCH USE ONLY

NOT FOR USE IN CLINICAL DIAGNOSTIC PROCEDURES

9th Edition (Revised in Jul, 2013)

[PRODUCT INFORMATION]**Immunogen:** CIP2A, Human**Clonality:** Polyclonal**Host:** Rabbit**Immunoglobulin Type:** IgG**Purification:** Affinity Chromatography.**Applications:** WB, ICC, IHC-P, IHC-F, ELISA**Concentration:** 200µg/mL**UOM:** 100µg**[IMMUNOGEN INFORMATION]****Immunogen:** Recombinant CIP2A (Asn230~Glu560) expressed in *E.coli*.**Accession No.:** RPR982Hu01**Sequence:** The target protein is fused with two N-terminal Tags, His-tag and GST-tag and its sequence is listed below.

MSPILGYWKI KGLVQPTRL L LEYLEEKYEE HLYERDEGDK WRNKKFELGL EFPNLPYYID
GDVKLTQSMA IIRYIADKHN MLGGCPKERA EISMLEGAVL DIRYGVSR IA YSKDFETLKV
DFLSKLP EML KMFEDRLCHK TYLNGDHVTH PDFMLYDALD VVLYMDPMCL DAFP KLVCFK
KRIEAI PQID KYLKSSKYIA WPLQG WQATF GGGDHPPKSD GSTSGSGHHH HHSAGLVPR
GSTAIGMKET AAKFERQHM DSPDLGTGGG SGIEGRGSMG YRGSEF-N IHQTFQLIFN
ILINGDGT LT RKYSVDLLMD LLKNPKIADY LTRYEHFSSC LHQVLG LLNG KDPDSSSKVL
ELL LAFCSVT QLRHMLTQMM FEQSPPGSAT LGSHTKCLEP TVALLRWLSQ PLDGS ENCSV
LAL ELFKEIF EDVIDAANCS SADR FV TLLL PTILDQLQFT EQNLDEALTR KK CERIAKAI
EVLLTLCGDD TLKMHI AKIL TTVKCTT LIE QQFTY GKIDL GFGTKVADSE LCKLAADVIL
KTLDLINKLK PLVPGMEVSF YKILQDPRLI TPLAFALTS D NREQVQSGLR ILLEAAPLPD
FPALVLGESI AANNAYRQQE

[ANTIBODY SPECIFICITY]

The antibody is a rabbit polyclonal antibody raised against CIP2A. It has been selected for its ability to recognize CIP2A in immunohistochemical staining and

western blotting.

[APPLICATIONS]

Western blotting: 1:100-400

Immunocytochemistry in formalin fixed cells: 1:100-500

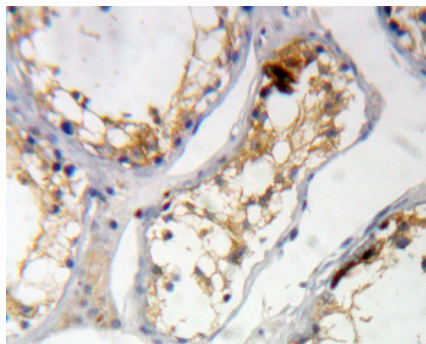
Immunohistochemistry in formalin fixed frozen section: 1:100-500

Immunohistochemistry in paraffin section: 1:50-200

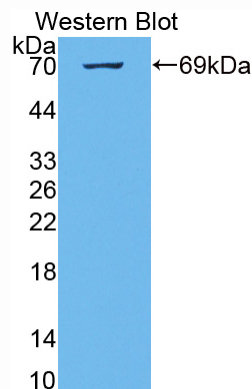
Enzyme-linked Immunosorbent Assay: 1:100-200

Optimal working dilutions must be determined by end user.

[IMAGES]



Used in DAB staining on formalin fixed
paraffin-embedded Testis tissue



Used in Western Blot, Sample:
Recombinant CIP2A, Human

[CONTENTS]

Form & Buffer: Supplied as solution form in PBS, pH7.4, containing 0.02% NaN₃, 50% glycerol.

[QUALITY CONTROL]

Content: The quality control contains recombinant CIP2A (Asn230~Glu560) disposed in loading buffer.

Usage: 10uL per well when 3,3'-Diaminobenzidine(DAB) as the substrate.
5uL per well when used in enhanced chemiluminescent (ECL).

Note: The quality control is specifically manufactured as the positive control. Not used for other purposes.

Loading Buffer: 100mM Tris(pH8.8), 2% SDS, 200mM NaCl, 50% glycerol, BPB 0.01%, NaN₃ 0.02%.

[STORAGE]

Store at 4°C for frequent use. Stored at -20°C to -80°C in a manual defrost freezer for one year without detectable loss of activity. Avoid repeated freeze-thaw cycles.