

**PAB240Hu01**

**Polyclonal Antibody to Keratin 20 (KRT20)**

**Organism Species: Homo sapiens (Human)**

***Instruction manual***

FOR IN VITRO USE AND RESEARCH USE ONLY

NOT FOR USE IN CLINICAL DIAGNOSTIC PROCEDURES

---

---

9th Edition (Revised in Jul, 2013)

## **[ PRODUCT INFORMATION ]**

**Immunogen:** KRT20, Human

**Clonality:** Polyclonal

**Host:** Rabbit

**Immunoglobulin Type:** IgG

**Purification:** Affinity Chromatography.

**Applications:** WB, ICC, IHC-P, IHC-F, ELISA

**Concentration:** 200µg/mL

**UOM:** 100µg

## **[ IMMUNOGEN INFORMATION ]**

**Immunogen:** Recombinant KRT20 (His9~Ile424) expressed in *E.coli*.

**Accession No.:** RPB240Hu01

**Sequence:** The target protein is fused with two N-terminal Tags, His-tag and T7-tag and its sequence is listed below.

MGSSHHHHHH SSSLVPRGSH MASMTGGQQM GRGSEF- HR SLSSSLQAPV  
VSTVGMQRLG TTPSVYGGAG GRGIRISNSR HTVNYGSDLT GGGDLFVGNE  
KMAMQNLNDR LASYLEKVRT LEQSNSKLEV QIKQWYETNA PRAGRDYSAY YRQIEELRSQ  
IKDAQLQNR CVLQIDNAKL AAEDFRLKYE TERGIRLTVE ADLQGLNKVF DDLTLHKTDL  
EIQIEELNKD LALLKKEHQE EVDGLHKHLG NTVNVEVDAA PGLNLGVIMN EMRQKYEVMA  
QKNLQEAKEQ FERQTAVLQQ QVTVNTEELK GTEVQLTELRTS QSLEIEL QSHLSMKESL  
EHTLEETKAR YSSQLANLQS LLSSLEAQLM QIRSNMERQN NEYHILLDIK TRLEQEIATY  
RRLLEGEDVK TTEYQLSTLE ERDIKKTRKI KTVVQEVVDG KVSSEVKEV EENI

## **[ ANTIBODY SPECIFICITY ]**

The antibody is a rabbit polyclonal antibody raised against KRT20. It has been selected for its ability to recognize KRT20 in immunohistochemical staining and western blotting.

## **[ APPLICATIONS ]**

Western blotting: 1:100-400

Immunocytochemistry in formalin fixed cells: 1:100-500

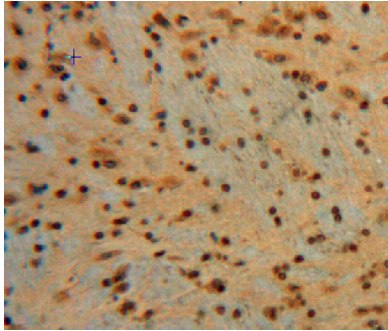
Immunohistochemistry in formalin fixed frozen section: 1:100-500

Immunohistochemistry in paraffin section: 1:50-200

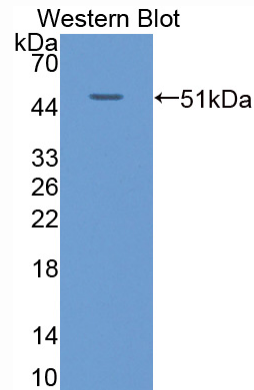
Enzyme-linked Immunosorbent Assay: 1:100-200

Optimal working dilutions must be determined by end user.

## [ IMAGES ]



Used in DAB staining on formalin fixed  
paraffin- embedded brain tissue



Used in Western Blot ,Sample:  
Recombinant KRT20,Human

## [ CONTENTS ]

**Form & Buffer:** Supplied as solution form in PBS, pH7.4, containing 0.02% NaN<sub>3</sub>, 50% glycerol.

## [ QUALITY CONTROL ]

**Content:** The quality control contains recombinant KRT20 (His9~Ile424) disposed in loading buffer.

**Usage:** 10uL per well when 3,3'-Diaminobenzidine(DAB) as the substrate.  
5uL per well when used in enhanced chemiluminescent (ECL).

**Note:** The quality control is specifically manufactured as the positive control. Not used for other purposes.

**Loading Buffer:** 100mM Tris(pH8.8), 2% SDS, 200mM NaCl, 50% glycerol, BPB 0.01%, NaN<sub>3</sub> 0.02%.

## [ STORAGE ]

Store at 4°C for frequent use. Stored at -20°C to -80°C in a manual defrost freezer for one year without detectable loss of activity. Avoid repeated freeze-thaw cycles.