

**PAA491Mu01**

**Polyclonal Antibody to Keratin 2 (KRT2)**  
**Organism Species: Mus musculus (Mouse)**

***Instruction manual***

FOR IN VITRO USE AND RESEARCH USE ONLY  
NOT FOR USE IN CLINICAL DIAGNOSTIC PROCEDURES

9th Edition (Revised in Jul, 2013)

## [ **PRODUCT INFORMATION** ]

**Immunogen:** KRT2, Mouse

**Clonality:** Polyclonal

**Host:** Rabbit

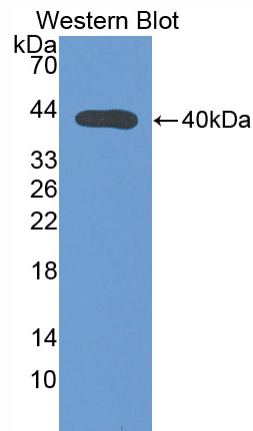
**Immunoglobulin Type:** IgG

**Purification:** Affinity Chromatography.

**Applications:** WB, ICC, IHC-P, IHC-F, ELISA

**Concentration:** 200µg/mL

**UOM:** 100µg



Sample: Recombinant KRT2, Mouse

## [ **IMMUNOGEN INFORMATION** ]

**Immunogen:** Recombinant KRT2 (Arg200~Glu508) expressed in *E.coli*.

**Accession No.:** RPA491Mu01

**Sequence:** The target protein is fused with two N-terminal Tags, His-tag and T7-tag and its sequence is listed below.

MGSSHHHHH SSSLVPRGSH MASMTGGQQM GRGSEF- R EQIKTLNNKF ASFIDKVRFL  
EQQNQVLR TK WELLQQLDVG SRTTNLDPIF QAYIGMLKKQ VDRLSAERTS QESELNMQD  
LVEDFKKKYE DEINKRTSAE NDFVTIKKDV DSCYMDKTEL QARLDILAQE VNFLRTLTYDA  
ELS QLQQDVT DTNVILSMDN NRNLDLDSII AEVQNQYEMI AHKSKAESEE LYHSKYEELQ  
VTAVKHGDSL KEIKMEISEL NRTIQR LQGE ISHVKKQCKG VQDSIADAEQ RGEHAIKDAR  
GKLTDL EEAL QQCREDLAR LRDYQELMNT KLSLDVEIAT YRKLLEGE

## **[ ANTIBODY SPECIFICITY ]**

The antibody is a rabbit polyclonal antibody raised against KRT2. It has been selected for its ability to recognize KRT2 in immunohistochemical staining and western blotting.

## **[ APPLICATIONS ]**

Western blotting: 1:100-400

Immunocytochemistry in formalin fixed cells: 1:100-500

Immunohistochemistry in formalin fixed frozen section: 1:100-500

Immunohistochemistry in paraffin section: 1:50-200

Enzyme-linked Immunosorbent Assay: 1:100-200

Optimal working dilutions must be determined by end user.

## **[ CONTENTS ]**

**Form & Buffer:** Supplied as solution form in PBS, pH7.4, containing 0.02%  $\text{NaN}_3$ , 50% glycerol.

## **[ QUALITY CONTROL ]**

**Content:** The quality control contains recombinant KRT2 (Arg200~Glu508) disposed in loading buffer.

**Usage:** 10uL per well when 3,3'-Diaminobenzidine(DAB) as the substrate.  
5uL per well when used in enhanced chemiluminescent (ECL).

**Note:** The quality control is specifically manufactured as the positive control. Not used for other purposes.

**Loading Buffer:** 100mM Tris(pH8.8), 2% SDS, 200mM NaCl, 50% glycerol, BPB 0.01%,  $\text{NaN}_3$  0.02%.

## **[ STORAGE ]**

Store at 4°C for frequent use. Stored at -20°C to -80°C in a manual defrost freezer for one year without detectable loss of activity. Avoid repeated freeze-thaw cycles.