

**PAB886Ra01**

**Polyclonal Antibody to Angiotensin I Converting Enzyme 2 (ACE2)**

**Organism Species: Rattus norvegicus (Rat)**

***Instruction manual***

FOR IN VITRO USE AND RESEARCH USE ONLY

NOT FOR USE IN CLINICAL DIAGNOSTIC PROCEDURES

---

---

9th Edition (Revised in Jul, 2013)

## **[ PRODUCT INFORMATION ]**

**Immunogen:** ACE2, Rat

**Clonality:** Polyclonal

**Host:** Rabbit

**Immunoglobulin Type:** IgG

**Purification:** Affinity Chromatography.

**Applications:** WB, ICC, IHC-P, IHC-F, ELISA

**Concentration:** 200µg/mL

**UOM:** 100µg

## **[ IMMUNOGEN INFORMATION ]**

**Immunogen:** Recombinant ACE2 (Leu392~Val739) expressed in *E.coli*.

**Accession No.:** RPB886Ra01

**Sequence:** The target protein is fused with two N-terminal Tags, His-tag and T7-tag and its sequence is listed below.

MGSSHHHHHH SSGLVPRGSH MASMTGGQQM GRGS- LRNGANEGF HEAVGEIMSL  
SAATPKHLKS IGLLPSNFQE DNETEINFL KQALTIVGTL PFTYMLEKWR WMVFQDKIPR  
EQWTKKWWEM KREIVGVVEP LPHDETYCDP ASLFHVSNDY SFIRYYTRTI YQFQFQEALC  
QAAKHGDLPH KCDISNSTEA GQKLLNMLSL GNSGPWTLAL ENVVGSRNMD VKPLLNYFQP  
LFVWLKEQNR NSTVGWSTDW SPYADQSIKV RISLKSALGK NAYEWDNEM YLFRSSVAYA  
MREYFSREKN QTVPFGEADV WVSDLKPRVS FNFFVTSPKN VSDIIPRSEV EEAIRMSRGR  
INDIFGLNDN SLEFLGIYPT LKPPYEPPV

## **[ ANTIBODY SPECIFICITY ]**

The antibody is a rabbit polyclonal antibody raised against ACE2. It has been selected for its ability to recognize ACE2 in immunohistochemical staining and western blotting.

## **[ APPLICATIONS ]**

Western blotting: 1:100-400

Immunocytochemistry in formalin fixed cells: 1:100-500

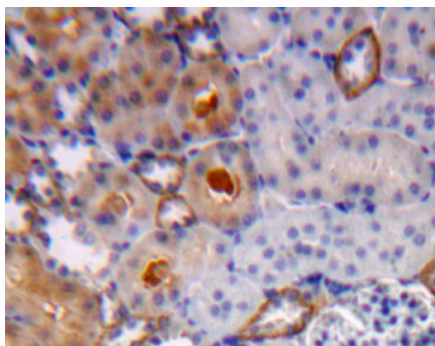
Immunohistochemistry in formalin fixed frozen section: 1:100-500

Immunohistochemistry in paraffin section: 1:50-200

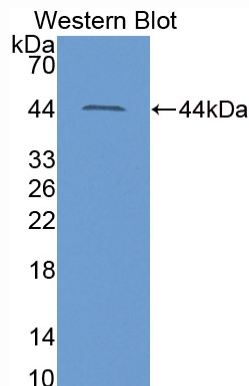
Enzyme-linked Immunosorbent Assay: 1:100-200

Optimal working dilutions must be determined by end user.

## [ **IMAGES** ]



Used in DAB staining on formalin fixed  
paraffin-embedded Kidney tissue



Used in Western Blot, Sample:  
Recombinant ACE2, Rat

## [ **CONTENTS** ]

**Form & Buffer:** Supplied as solution form in PBS, pH7.4, containing 0.02%  $\text{NaN}_3$ , 50% glycerol.

## [ **QUALITY CONTROL** ]

**Content:** The quality control contains recombinant ACE2 (Leu392~Val739) disposed in loading buffer.

**Usage:** 10uL per well when 3,3'-Diaminobenzidine(DAB) as the substrate.  
5uL per well when used in enhanced chemiluminescent (ECL).

**Note:** The quality control is specifically manufactured as the positive control. Not used for other purposes.

**Loading Buffer:** 100mM Tris(pH8.8), 2% SDS, 200mM NaCl, 50% glycerol, BPB 0.01%,  $\text{NaN}_3$  0.02%.

## [ **STORAGE** ]

Store at 4°C for frequent use. Stored at -20°C to -80°C in a manual defrost freezer for one year without detectable loss of activity. Avoid repeated freeze-thaw cycles.