

PAA731Hu01

Polyclonal Antibody to Complement Component 7 (C7)

Organism Species: Homo sapiens (Human)

Instruction manual

FOR IN VITRO USE AND RESEARCH USE ONLY

NOT FOR USE IN CLINICAL DIAGNOSTIC PROCEDURES

[PRODUCT INFORMATION]

Immunogen: C7, Human

Clonality: Polyclonal

Host: Rabbit

Immunoglobulin Type: IgG

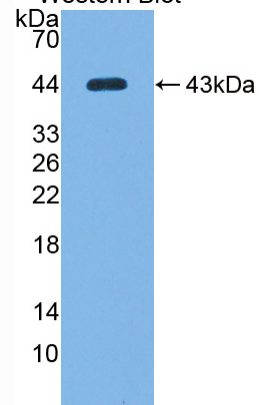
Purification: Affinity Chromatography.

Applications: WB, ICC, IHC-P, IHC-F, ELISA

Concentration: 200µg/mL

UOM: 100µg

9th Edition (Revised in Jul, 2013)
Western Blot



Sample: Recombinant C7, Human

[IMMUNOGEN INFORMATION]

Immunogen: Recombinant C7 (Ser122~His456) linked with LEHHHHHH expressed in *E.coli*.

Accession No.: RPA731Hu01

Sequence: The target protein is fused with two N-terminal Tags, His-tag and T7-tag and its sequence is listed below.

MGSSHHHHHH SSGLVPRGSH MASMTGGQQM GRGSEF- SERRPSCDI DKPPPNIELT
GNGYNELTQQ FRNRVINTKS FGGQCRKVFS GDGKDFYRLS GNVLSYTFQV KINNDNFNYEF
YNSTWSYVKH TSTEHTSSSR KRSFFRSSSS SSRSYTSHTN EIHKGKSYQL LVVENTVEVA
QFINNNPEFL QLAEPFWKEL SHLPSLYDYS AYRRLIDQYG THYLQSGSLG GEYRVLFYVD
SEKLGQNDNFN SVEEKKCKSS GWHFVVKFSS HGCKELENAL KAASGTQNNV LRGEPIRGG
GAGFISGLSY LELDNPAGNK RRYSAWAESV TNLPQVIKQK LTPLYELVKE VPCASVKKLY
LKWALEEYLD EFDPCHEH

[ANTIBODY SPECIFICITY]

The antibody is a rabbit polyclonal antibody raised against C7. It has been selected for its ability to recognize C7 in immunohistochemical staining and western blotting.

[APPLICATIONS]

Western blotting: 1:100-400

Immunocytochemistry in formalin fixed cells: 1:100-500

Immunohistochemistry in formalin fixed frozen section: 1:100-500

Immunohistochemistry in paraffin section: 1:50-200

Enzyme-linked Immunosorbent Assay: 1:100-200

Optimal working dilutions must be determined by end user.

[CONTENTS]

Form & Buffer: Supplied as solution form in PBS, pH7.4, containing 0.02% NaN₃, 50% glycerol.

[QUALITY CONTROL]

Content: The quality control contains recombinant C7 disposed in loading buffer.

Usage: 10uL per well when 3,3'-Diaminobenzidine(DAB) as the substrate.
5uL per well when used in enhanced chemiluminescent (ECL).

Note: The quality control is specifically manufactured as the positive control. Not used for other purposes.

Loading Buffer: 100mM Tris(pH8.8), 2% SDS, 200mM NaCl, 50% glycerol, BPB 0.01%, NaN₃ 0.02%.

[STORAGE]

Store at 4°C for frequent use. Stored at -20°C to -80°C in a manual defrost freezer for one year without detectable loss of activity. Avoid repeated freeze-thaw cycles.