

PAA522Mu01

Polyclonal Antibody to Keratin 14 (KRT14)

Organism Species: *Mus musculus* (Mouse)

Instruction manual

FOR IN VITRO USE AND RESEARCH USE ONLY

NOT FOR USE IN CLINICAL DIAGNOSTIC PROCEDURES

9th Edition (Revised in Jul, 2013)

[PRODUCT INFORMATION]

Immunogen: KRT14, Mouse

Clonality: Polyclonal

Host: Rabbit

Immunoglobulin Type: IgG

Purification: Affinity Chromatography.

Applications: WB, ICC, IHC-P, IHC-F, ELISA

Concentration: 200µg/mL

UOM: 100µg

[IMMUNOGEN INFORMATION]

Immunogen: Recombinant KRT14 (Met14~Asn484) expressed in *E.coli*.

Accession No.: RPA522Mu01

Sequence: The target protein is fused with two N-terminal Tags, His-tag and T7-tag and its sequence is listed below.

MGSSHHHHHH SSGLVPRGSH MASMTGGQQM GRGSEF- MKGSCGI GGGSSRMSSI
LAGGSCRAPS TYGGMSVTSS RFSSGGACGI GGGYGGSFSS SSFGGGLGSG
FGGRFDGFGG FGGGLGGGF GGGLGGGLGG GIGDGLLVGS EKVTMQNLND
RLATYLDKVR ALEEANTELE VKIRDWYQRQ RPTEIKDYSP YFKTIEDLKS KILAATVDNA
NVLLQIDNAR LAADDFR TKF ETEQSLRMSV EADINGLRRV LDELTLARAD LEMQIESLKE
ELAYLKKNHE EEMASMRGQV GGDVNVEMDA APGVDLSRIL NEMRDQYEKM
AEKNRKDAEE WFFSKTEELN REVATNSELV QSGKSEISEL RRTMQNLEIE LQSQLSMKAS
LENNLEETKG RYCMQLAQIQ EMIGSVEEQL AQLRCEMEQQ NQEYKILLDV KTRLEQEIAT
YRRLLEGEDA HLSSSQFSSS SQFSSGSQSS RDVTSTNRQI RTKVMDVHDG KVVSTHEQVL
RTKN

[ANTIBODY SPECIFICITY]

The antibody is a rabbit polyclonal antibody raised against KRT14. It has been selected for its ability to recognize KRT14 in immunohistochemical staining and western blotting.

[APPLICATIONS]

Western blotting: 1:100-400

Immunocytochemistry in formalin fixed cells: 1:100-500

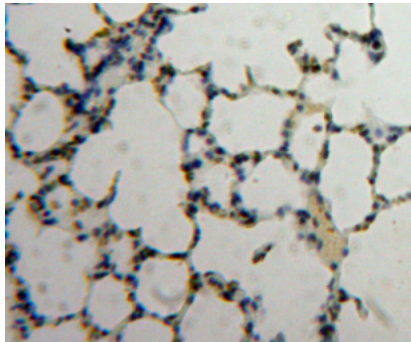
Immunohistochemistry in formalin fixed frozen section: 1:100-500

Immunohistochemistry in paraffin section: 1:50-200

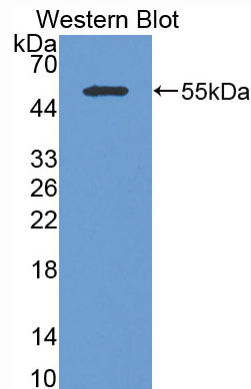
Enzyme-linked Immunosorbent Assay: 1:100-200

Optimal working dilutions must be determined by end user.

[IMAGES]



Used in DAB staining on formalin fixed
paraffin-embedded Lung tissue



Used in Western Blot, Sample:
Recombinant KRT14, Mouse

[CONTENTS]

Form & Buffer: Supplied as solution form in PBS, pH7.4, containing 0.02% NaN_3 , 50% glycerol.

[QUALITY CONTROL]

Content: The quality control contains recombinant KRT14 (Met14~Asn484) disposed in loading buffer.

Usage: 10uL per well when 3,3'-Diaminobenzidine(DAB) as the substrate.
5uL per well when used in enhanced chemiluminescent (ECL).

Note: The quality control is specifically manufactured as the positive control. Not used for other purposes.

Loading Buffer: 100mM Tris(pH8.8), 2% SDS, 200mM NaCl, 50% glycerol, BPB 0.01%, NaN_3 0.02%.

[STORAGE]

Store at 4°C for frequent use. Stored at -20°C to -80°C in a manual defrost freezer for one year without detectable loss of activity. Avoid repeated freeze-thaw cycles.