

PAA522Ra01

Polyclonal Antibody to Keratin 14 (KRT14)

Organism Species: Rattus norvegicus (Rat)

Instruction manual

FOR IN VITRO USE AND RESEARCH USE ONLY

NOT FOR USE IN CLINICAL DIAGNOSTIC PROCEDURES

9th Edition (Revised in Jul, 2013)

[PRODUCT INFORMATION]

Immunogen: KRT14, Rat

Clonality: Polyclonal

Host: Rabbit

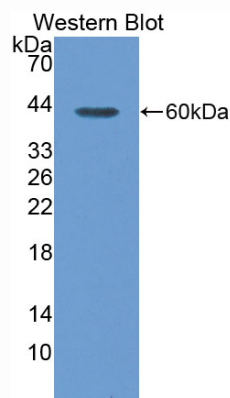
Immunoglobulin Type: IgG

Purification: Affinity Chromatography.

Applications: WB, ICC, IHC-P, IHC-F, ELISA

Concentration: 200µg/mL

UOM: 100µg



Sample: Recombinant KRT14, Rat

[IMMUNOGEN INFORMATION]

Immunogen: Recombinant KRT14 (Glu122~Glu429) expressed in *E.coli*.

Accession No.: RPA522Ra01

Sequence: The target protein is fused with two N-terminal Tags, His-tag and T7-tag and its sequence is listed below.

MGSSHHHHHH SSGLVPRGSH MASMTGGQQM GRGSEF- EKVTMQNLN DRLATYLDKV
RALEEANS DL EVKIRDWYQR QRPTEIKDYS PYFKTIEDLK SKILAA TVDN ANVLLQIDNA
RLAADD FR TK FETEQLSRIN VESDINGLRR VLDELTLARA DLEMQIESLK EELAYLKKNH
EEEMASMRGQ VGGDVNVEMD AAPGV DLSRI LNEMRDQY EK MAEKNR KDAE
DWFFTKTEEL NRE VATNSEL VQSGKSEISE LRRTMQNLEI ELQS QLSMKA SLENNLEETK
GRYCMQLAQI QEMIGSV EEQ LAQLRC EMEQ QNQEYKILLD VKTRLEQEIA TYRRLL EGE

[ANTIBODY SPECIFICITY]

The antibody is a rabbit polyclonal antibody raised against KRT14. It has been selected for its ability to recognize KRT14 in immunohistochemical staining and western blotting.

[APPLICATIONS]

Western blotting: 1:100-400

Immunocytochemistry in formalin fixed cells: 1:100-500

Immunohistochemistry in formalin fixed frozen section: 1:100-500

Immunohistochemistry in paraffin section: 1:50-200

Enzyme-linked Immunosorbent Assay: 1:100-200

Optimal working dilutions must be determined by end user.

[CONTENTS]

Form & Buffer: Supplied as solution form in PBS, pH7.4, containing 0.02% NaN₃, 50% glycerol.

[QUALITY CONTROL]

Content: The quality control contains recombinant KRT14 (Glu122~Glu429) disposed in loading buffer.

Usage: 10uL per well when 3,3'-Diaminobenzidine(DAB) as the substrate.
5uL per well when used in enhanced chemiluminescent (ECL).

Note: The quality control is specifically manufactured as the positive control. Not used for other purposes.

Loading Buffer: 100mM Tris(pH8.8), 2% SDS, 200mM NaCl, 50% glycerol, BPB 0.01%, NaN₃ 0.02%.

[STORAGE]

Store at 4°C for frequent use. Stored at -20°C to -80°C in a manual defrost freezer for one year without detectable loss of activity. Avoid repeated freeze-thaw cycles.