

PAA709Hu01

Polyclonal Antibody to Toll Like Receptor 9 (TLR9)

Organism Species: Homo sapiens (Human)

Instruction manual

FOR IN VITRO USE AND RESEARCH USE ONLY

NOT FOR USE IN CLINICAL DIAGNOSTIC PROCEDURES

9th Edition (Revised in Jul, 2013)

[PRODUCT INFORMATION]

Immunogen: TLR9, Human

Clonality: Polyclonal

Host: Rabbit

Immunoglobulin Type: IgG

Purification: Affinity Chromatography.

Applications: WB, ICC, IHC-P, IHC-F, ELISA

Concentration: 200µg/mL

UOM: 100µg

[IMMUNOGEN INFORMATION]

Immunogen: Recombinant TLR9 (Thr28~Ser362) expressed in *E.coli*.

Accession No.: RPA709Hu01

Sequence: The target protein is fused with two N-terminal Tags, His-tag and T7-tag and its sequence is listed below.

MGSSHHHHHHH SSSLVPRGSH MASMTGGQQM GRGSEF- TLP AFLPCELQPH
GLVNCNWLFL KSVPHFSMAA PRGNVTLSL SSNRIHHLHD SDF AHLPSLR HLNLKWNCP
VGLSPMHFPC HMTIEPSTFL AVPTLEELNL SYN NIMTVPA LPKSLISLSL SHTNLM
LDASLAGLHALR FLFMDGNCY YKNPCRQALEV APGALLGLGN LTHLSLK YNN LTVV
PRNLPS SLEYLLLSYN RIVKLAPEDL ANLTALRVLD VGGNCRRCDH APNPCMECPR
HFPQLHPDFT SHLSRLEGLV LKSSLSWLN ASWFRGLGNL RVLDSLSENF L YKCITK
TKAF QGLTQLRKL NLSFNYQKRVS FAHLSLAPSF GS

[ANTIBODY SPECIFICITY]

The antibody is a rabbit polyclonal antibody raised against TLR9. It has been selected for its ability to recognize TLR9 in immunohistochemical staining and western blotting.

[APPLICATIONS]

Western blotting: 1:100-400

Immunocytochemistry in formalin fixed cells: 1:100-500

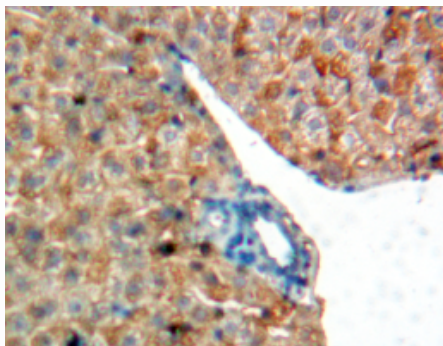
Immunohistochemistry in formalin fixed frozen section: 1:100-500

Immunohistochemistry in paraffin section: 1:50-200

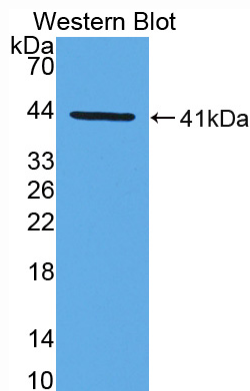
Enzyme-linked Immunosorbent Assay: 1:100-200

Optimal working dilutions must be determined by end user.

[**IMAGES**]



Used in DAB staining on formalin fixed
paraffin-embedded Liver tissue



Used in Western Blot, Sample:
Recombinant TLR9, Human

[**CONTENTS**]

Form & Buffer: Supplied as solution form in PBS, pH7.4, containing 0.02% NaN₃, 50% glycerol.

[**QUALITY CONTROL**]

Content: The quality control contains recombinant TLR9 (Thr28~Ser362) disposed in loading buffer.

Usage: 10uL per well when 3,3'-Diaminobenzidine(DAB) as the substrate.
5uL per well when used in enhanced chemiluminescent (ECL).

Note: The quality control is specifically manufactured as the positive control. Not used for other purposes.

Loading Buffer: 100mM Tris(pH8.8), 2% SDS, 200mM NaCl, 50% glycerol, BPB 0.01%, NaN₃ 0.02%.

[**STORAGE**]

Store at 4°C for frequent use. Stored at -20°C to -80°C in a manual defrost freezer for one year without detectable loss of activity. Avoid repeated freeze-thaw cycles.