

**PAS085Hu01****Polyclonal Antibody to Angiotensin 1-7 (Ang1-7)****Organism Species: Homo sapiens (Human)*****Instruction manual***

FOR IN VITRO USE AND RESEARCH USE ONLY  
NOT FOR USE IN CLINICAL DIAGNOSTIC PROCEDURES

---

---

9th Edition (Revised in Jul, 2013)

**[ PRODUCT INFORMATION ]****Immunogen:** Ang1-7-OVA**Clonality:** Polyclonal**Host:** Rabbit**Immunoglobulin Type:** IgG**Purification:** Affinity Chromatography.**Applications:** WB, ICC, IHC-P, IHC-F, ELISA**Concentration:** 200µg/mL**UOM:** 100µg**[ IMMUNOGEN INFORMATION ]****Immunogen:** Artificially Synthesized polypeptide, Ang1-7 conjugated to OVA.**Accession No.:** CPS085Hu21**Sequence:** The target polypeptide sequence is listed below.

Asp-Arg-Val-Tyr-Ile-His-Pro

**[ ANTIBODY SPECIFICITY ]**

The antibody is a rabbit polyclonal antibody raised against Ang1-7 conjugated to OVA. It has been selected for its ability to recognize Ang1-7 in immunohistochemical staining and western blotting.

**[ APPLICATIONS ]**

Western blotting: 1:100-400

Immunocytochemistry in formalin fixed cells: 1:100-500

Immunohistochemistry in formalin fixed frozen section: 1:100-500

Immunohistochemistry in paraffin section: 1:50-200

Enzyme-linked Immunosorbent Assay: 1:100-200

Optimal working dilutions must be determined by end user.

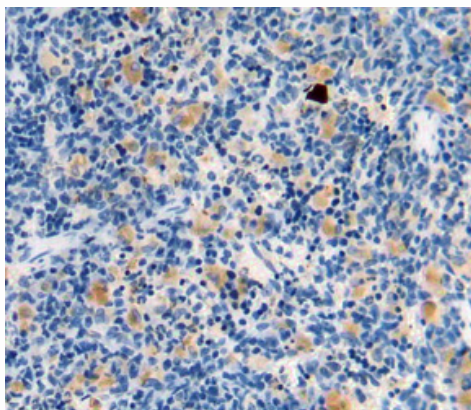
## **[ CONTENTS ]**

**Form & Buffer:** Supplied as solution form in PBS, pH7.4, containing 0.02% NaN<sub>3</sub>, 50% glycerol.

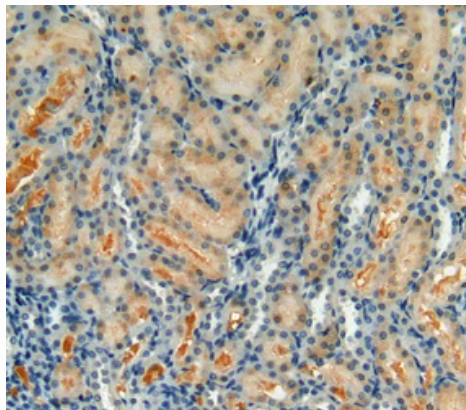
## **[ STORAGE ]**

Store at 4°C for frequent use. Stored at -20°C to -80°C in a manual defrost freezer for one year without detectable loss of activity. Avoid repeated freeze-thaw cycles.

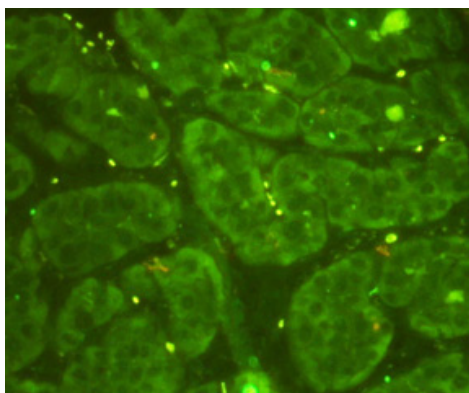
## **[ IMAGES ]**



**Used in DAB staining on formalin fixed  
paraffin- embedded spleen tissue**



**Used in DAB staining on formalin fixed  
paraffin- embedded kidney tissue**



**Used in FITC staining on formalin fixed  
paraffin- embedded liver cancer tissue**