

**pA84943Hu01**  
**Polyclonal Antibody to Peptidase Inhibitor 16 (PI16)**  
**Organism: Homo sapiens (Human)**  
***Instruction manual***

FOR IN VITRO USE AND RESEARCH USE ONLY  
NOT FOR USE IN CLINICAL DIAGNOSTIC PROCEDURES

7th Edition (Revised in May, 2013)

## **[ PRODUCT INFORMATION ]**

**Immunogen:** PI16, Human

**Clonality:** Polyclonal

**Host:** Rabbit

**Immunoglobulin Type:** IgG

**Purification:** Affinity Chromatography.

**Applications:** WB, ICC, IHC-P, IHC-F, ELISA

**Concentration:** 200µg/mL

**UOM:** 100µg

## **[ IMMUNOGEN INFORMATION ]**

**Immunogen:** Recombinant PI16 (Leu28~Gly440) expressed in *E. coli*.

**USCN Accession No.:** rP84943Hu01

**Sequence:** The target protein is fused with two N-terminal Tags, His-tag and GST-tag and its sequence is listed below.

MSPILGYWKI KGLVQPTRL L LEYLEEKYEE HLYERDEGDK WRNKKFELGL EFPNLPYYID  
GDVKLTQSMA IIRYIADKHN MLGGCPKERA EISMLEGAVL DIRYGVSR IA YSKDFETLKV  
DFLSKLP EML KMFEDRLCHK TYLNGDHVTH PDFMLYDALD VVLYMDPMCL DAFPKLVCFK  
KRIEAIQID KYLKSSKYIA WPLQG WQATF GGGDHPPKSD GSTSGSGHHH HHSAGLVPR  
GSTAIGMKET AAKFERQHM DSPDLGTLEV LFQGPLGSEF- LTD EEKRLMVELH  
NLYRAQVSPT ASDMLHMRWD EELAAFAKAY ARQCVWGHNK ERGRRGENLF  
AITDEGMDVP LAMEEWHHER EHYNLSAATC SPGQMCGHYT QVVWAKTERI  
GCGSHFCEKL QGVEETNIEL LVCNYEPPGN VKGKRPYQEG TPCSQCPSGY HCKNSLCEPI  
GSPEDAQDLP YLVTEAP SFR ATEASDSRKM GTPSSLATGI PAFLVTEVSG SLATKALPAV  
ETQAP TSLAT KDPPSMATEA PPCVTTEVPS ILAAHSLPSL DEEPVTFPKS THVPIPKSAD  
KVTDKTKVPS RSPENSLDPK MSLTGARELL PHAQEEAEAE AELPPSSEVL ASVFPAQDKP  
GELQATLDHT GHTSSKSLPN FPNTSATANA TGGRALALQS SLPGAEGPDK PSVVSGLNSG

## **[ ANTIBODY SPECIFICITY ]**

The antibody is a rabbit polyclonal antibody raised against PI16. It has been

*Unique product Superb quality Client favorite Nicest service*  ISO9001:2008;  ISO13485:2003; 

selected for its ability to recognize PI16 in immunohistochemical staining and western blotting.

## [ APPLICATIONS ]

Western blotting: 1:100-400

Immunocytochemistry in formalin fixed cells: 1:100-500

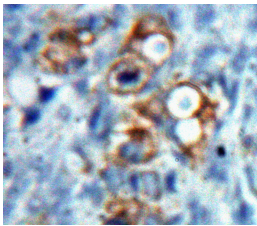
Immunohistochemistry in formalin fixed frozen section: 1:100-500

Immunohistochemistry in paraffin section: 1:50-200

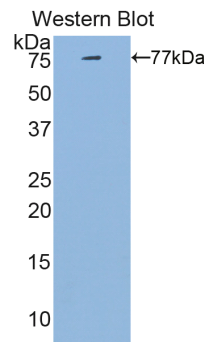
Enzyme-linked Immunosorbent Assay: 1:100-200

Optimal working dilutions must be determined by end user.

## [ IMAGES ]



**Used in DAB staining on formalin fixed paraffin-embedded Ovary tissue**



**Used in Western Blot ,Sample: Recombinant PI16,Human**

## [ CONTENTS ]

**Form & Buffer:** Supplied as solution form in PBS, pH7.4, containing 0.02%  $\text{NaN}_3$ , 50% glycerol.

## [ QUALITY CONTROL ]

**Content:** The quality control contains recombinant PI16 (Leu28~Gly440) disposed in loading buffer.

**Usage:** 10uL per well when 3,3'-Diaminobenzidine(DAB) as the substrate.  
5uL per well when used in enhanced chemiluminescent (ECL).

**Note:** The quality control is specifically manufactured as the positive control. Not used for other purposes.

**Loading Buffer:** 100mM Tris(pH8.8), 2% SDS, 200mM NaCl, 50% glycerol, BPB 0.01%,  $\text{NaN}_3$  0.02%.

*Unique product Superb quality Client favorite Nicest service*  ISO9001:2008;  ISO13485:2003;  CE

## [ **STORAGE** ]

Store at 4°C for frequent use. Stored at -20°C to -80°C in a manual defrost freezer for one year without detectable loss of activity. Avoid repeated freeze-thaw cycles.