

PAP780Hu01

Polyclonal Antibody to Proteasome 26S Subunit, Non ATPase 13 (PSMD13)

Organism Species: Homo sapiens (Human)

Instruction manual

FOR IN VITRO USE AND RESEARCH USE ONLY
NOT FOR USE IN CLINICAL DIAGNOSTIC PROCEDURES

[PRODUCT INFORMATION]

Immunogen: PSMD13, Human

Clonality: Polyclonal

Host: Rabbit

Immunoglobulin Type: IgG

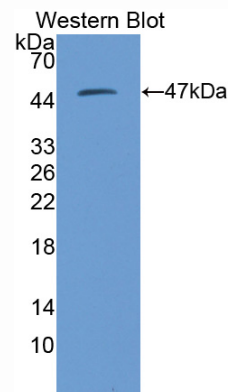
Purification: Affinity Chromatography.

Applications: WB, ICC, IHC-P, IHC-F, ELISA

Concentration: 200µg/mL

UOM: 100µg

9th Edition (Revised in Jul, 2013)



Sample: Recombinant PSMD13, Human

[IMMUNOGEN INFORMATION]

Immunogen: Recombinant PSMD13 (Met1~Thr378) expressed in *E.coli*.

Accession No.: RPP780Hu01

Sequence: The target protein is fused with two N-terminal Tags, His-tag and T7-tag and its sequence is listed below.

MGSSHHHHHH SGLVPRGSH MASMTGGQQM GRGSEF- MKDVPGFLQQ SQNSGPGQPA
VWHRLEELYT KKLWHQLTLQ VLDFVQDPCF AQGDGLIKLY ENFISEFEHR VNPLSLVEII
LHVVRQMTDP NVALTFLEKT REKVKSSDEA VILCKTAIGA LKLNIGDLQV TKETIEDVEE
MLNNLPGVTS VHSRFYDLSS KYYQTIGNHA SYYKDALRFL GCVDIKDLPV SEQQERAFTL
GLAGLLGEGV FNFGEMLMHP VLESLRNTDR QWLIDTLYAF NSGNVERFQT LKTAWGQQPD
LAANEAQLLR KIQLLCLMEM TFTRPANHRQ LTFEEIAKSA KITVNEVELL VMKALSVGLV
KGSIDEVDKR VHMTWVQPRV LDLQQIKGMK DRLEFWCTDV KSMEMLVEHQ AHDILT

[ANTIBODY SPECIFICITY]

The antibody is a rabbit polyclonal antibody raised against PSMD13. It has been selected for its ability to recognize PSMD13 in immunohistochemical staining and western blotting.

[APPLICATIONS]

Western blotting: 1:100-400

Immunocytochemistry in formalin fixed cells: 1:100-500

Immunohistochemistry in formalin fixed frozen section: 1:100-500

Immunohistochemistry in paraffin section: 1:50-200

Enzyme-linked Immunosorbent Assay: 1:100-200

Optimal working dilutions must be determined by end user.

[CONTENTS]

Form & Buffer: Supplied as solution form in PBS, pH7.4, containing 0.02% NaN_3 , 50% glycerol.

[QUALITY CONTROL]

Content: The quality control contains recombinant PSMD13 (Met1~Thr378) disposed in loading buffer.

Usage: 10uL per well when 3,3'-Diaminobenzidine(DAB) as the substrate.
5uL per well when used in enhanced chemiluminescent (ECL).

Note: The quality control is specifically manufactured as the positive control. Not used for other purposes.

Loading Buffer: 100mM Tris(pH8.8), 2% SDS, 200mM NaCl, 50% glycerol, BPB 0.01%, NaN_3 0.02%.

[STORAGE]

Store at 4°C for frequent use. Stored at -20°C to -80°C in a manual defrost freezer for one year without detectable loss of activity. Avoid repeated freeze-thaw cycles.