

PAM918Mu01

Polyclonal Antibody to Keratin 71 (KRT71)

Organism Species: *Mus musculus* (Mouse)

Instruction manual

FOR IN VITRO USE AND RESEARCH USE ONLY
NOT FOR USE IN CLINICAL DIAGNOSTIC PROCEDURES

9th Edition (Revised in Jul, 2013)

[**PRODUCT INFORMATION**]

Immunogen: KRT71, Mouse

Clonality: Polyclonal

Host: Rabbit

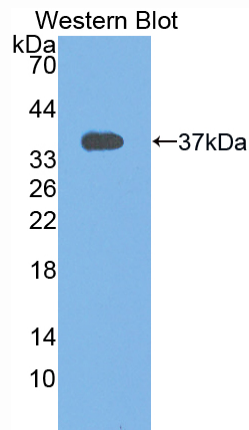
Immunoglobulin Type: IgG

Purification: Affinity Chromatography.

Applications: WB, ICC, IHC-P, IHC-F, ELISA

Concentration: 200µg/mL

UOM: 50µg



Sample: Recombinant KRT71, Mouse

[**IMMUNOGEN INFORMATION**]

Immunogen: Recombinant KRT71 (Arg132~Glu440) expressed in *E.coli*.

Accession No.: RPM918Mu01

Sequence: The target protein is fused with N-terminal His-Tag and its sequence is listed below.

MGHHHHHSGSEF-REIKALNN KFASFDKVR FLEQQNQVLQ TKWELLQQLD
LNNCKNNLEP ILEGHISNMR KQLETLSGDR VRLDSELRNV RDVVEDYKKK YEEEINRRTA
AENFVLLKK DVDAAYANKV ELQAKVDTMD QDIKFFKCLF EAEMAQIQSH ISDMSVILSM
DNNRNLDLDS IIDEVRAQYE EIALKSKEAE EALYQTKFQE LQLAAGRHGD DLKNTKNEIT
ELTRFIQRLR SEIENAKKQA SNLETAIADA EQRGDSALKD ARAKLDELEG ALHQAKEELA
RMLREYQELM SLKLALDMEI ATYRKLESE

[ANTIBODY SPECIFICITY]

The antibody is a rabbit polyclonal antibody raised against KRT71. It has been selected for its ability to recognize KRT71 in immunohistochemical staining and western blotting.

[APPLICATIONS]

Western blotting: 1:50-400

Immunocytochemistry in formalin fixed cells: 1:50-500

Immunohistochemistry in formalin fixed frozen section: 1:50-500

Immunohistochemistry in paraffin section: 1:10-100

Enzyme-linked Immunosorbent Assay: 1:100-200

Optimal working dilutions must be determined by end user.

[CONTENTS]

Form & Buffer: Supplied as solution form in PBS, pH7.4, containing 0.02% NaN₃, 50% glycerol.

[STORAGE]

Store at 4°C for frequent use. Stored at -20°C to -80°C in a manual defrost freezer for one year without detectable loss of activity. Avoid repeated freeze-thaw cycles.