

PAM086Hu01

Polyclonal Antibody to Ribosomal Protein S6 Kinase Beta 2 (RPS6Kb2)

Organism Species: Homo sapiens (Human)

Instruction manual

FOR IN VITRO USE AND RESEARCH USE ONLY

NOT FOR USE IN CLINICAL DIAGNOSTIC PROCEDURES

9th Edition (Revised in Jul, 2013)

[PRODUCT INFORMATION]

Immunogen: RPS6Kb2, Human

Clonality: Polyclonal

Host: Rabbit

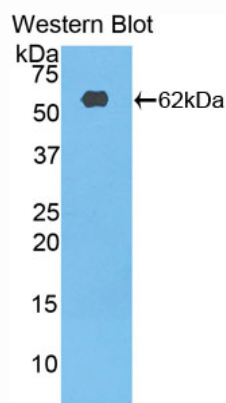
Immunoglobulin Type: IgG

Purification: Affinity Chromatography.

Applications: WB, ICC, IHC-P, IHC-F, ELISA

Concentration: 200µg/mL

UOM: 100µg



Sample: Recombinant RPS6Kb2, Human

[IMMUNOGEN INFORMATION]

Immunogen: Recombinant RPS6Kb2 (Asp194~Pro453) expressed in *E.coli*.

Accession No.: RPM086Hu01

Sequence: The target protein is fused with two N-terminal Tags, His-tag and GST-tag and its sequence is listed below.

MSPILGYWKI KGLVQPTRL L LEYLEEKYEE HLYERDEGDK WRNKKFELGL EFPNLPYYID
GDVKLTQSMA IIRYIADKHN MLGGCPKERA EISMLEGAVL DIRYGVSR IA YSKDFETLKV
DFLSKLP EML KMFEDRLCHK TYLNGDHVTH PDFMLYDALD VVLYMDPMCL DAFPKLVCFK
KRIEAIQID KYLKSSKYIA WPLQGWQATF GGGDHPKSD GSTSGSGHHH HHSAGLVPR
GSTAIGMKET AAKFERQHM DSPDLGTGGG SGIEGRGSMG YRGSEF-DLKPENI
MLSSQGH IKL TDFGLCKESI HEGAVTHTFC GTIEYMAPEI LVRSGHNRAV DWWSLGALMY
DMLTGSP PFT AENRKK TMDK IIRGKLALPP YLTPDARDLV KKFLKRNP SQ RIGGGPGDAA

DVQRHPFFRH MNWDDLLAWR VDPPFRPCLQ SEEDVSQFDT RFTRQTPVDS
PDDTALSESA NQAF LGFTYV APSVLDSIKE GFSFQPKLRS PRRLNSSPRA PVSPLKFSPF
EGFRPSPSLP EPTLPLPPL LPP

[ANTIBODY SPECIFICITY]

The antibody is a rabbit polyclonal antibody raised against RPS6Kb2. It has been selected for its ability to recognize RPS6Kb2 in immunohistochemical staining and western blotting.

[APPLICATIONS]

Western blotting: 1:100-400

Immunocytochemistry in formalin fixed cells: 1:100-500

Immunohistochemistry in formalin fixed frozen section: 1:100-500

Immunohistochemistry in paraffin section: 1:50-200

Enzyme-linked Immunosorbent Assay: 1:100-200

Optimal working dilutions must be determined by end user.

[CONTENTS]

Form & Buffer: Supplied as solution form in PBS, pH7.4, containing 0.02% NaN₃, 50% glycerol.

[QUALITY CONTROL]

Content: The quality control contains recombinant RPS6Kb2 (Asp194~Pro453) disposed in loading buffer.

Usage: 10uL per well when 3,3'-Diaminobenzidine(DAB) as the substrate.
5uL per well when used in enhanced chemiluminescent (ECL).

Note: The quality control is specifically manufactured as the positive control. Not used for other purposes.

Loading Buffer: 100mM Tris(pH8.8), 2% SDS, 200mM NaCl, 50% glycerol, BPB 0.01%, NaN₃ 0.02%.

[STORAGE]

Store at 4°C for frequent use. Stored at -20°C to -80°C in a manual defrost freezer for one year without detectable loss of activity. Avoid repeated freeze-thaw cycles.