

**A99202Hu01**

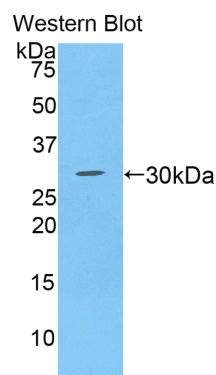
**Polyclonal Antibody to A Disintegrin And Metalloprotease 28 (ADAM28)**  
**Organism: Homo sapiens (Human)**  
*Instruction manual*

FOR IN VITRO USE AND RESEARCH USE ONLY  
 NOT FOR USE IN CLINICAL DIAGNOSTIC PROCEDURES

6th Edition (Revised in March, 2013)

**[ PRODUCT INFORMATION ]**

**Immunogen:** ADAM28, Human  
**Clonality:** Polyclonal  
**Host:** Rabbit  
**Immunoglobulin Type:** IgG  
**Purification:** Affinity Chromatography.  
**Applications:** WB, ICC, IHC-P, IHC-F  
**Concentration:** 200µg/mL  
**UOM:** 100µg



*Sample: Recombinant ADAM28, Human*

**[ IMMUNOGEN INFORMATION ]**

**Immunogen:** Recombinant ADAM28 (Glu525-Lys774) expressed in *E. coli*.  
**USCN Accession No.:** P99202Hu01  
**Sequence:** The target protein is fused with N-terminal His-Tag and its sequence is listed below.

MGHHHHHSGSEF-EVADKS CYNRNEGGSKYGYCRRVDDT LIPCKANDTM CGKLFQGGG  
 DNLPWKGRIV TFLTCKTFDP EDTSQEIGMVANGTKCGDNK VCINAECVDI EKAYKSTNCS  
 SKCKGHAVCD HELQCQCEEG WIPPCDDSSVVFHFSIVVG VLFPMAVIFV VVAMVIRHQS  
 SREKQKKDQR PLSTTGTRPH KQKRKPMVKAVQPQEMSQM KPHVYDLPVE  
 GNEPPASFHK DTNALPPTVF KDNPVSTPKD SNPK

*Unique product Superb quality Client favorite Nicest service*  ISO9001:2008;  ISO13485:2003;  CE

## [ **ANTIBODY SPECIFICITY** ]

The antibody is a rabbit polyclonal antibody raised against ADAM28. It has been selected for its ability to recognize ADAM28 in immunohistochemical staining and western blotting.

## [ **APPLICATIONS** ]

Western blotting: 1:100-400

Immunocytochemistry in formalin fixed cells: 1:100-500

Immunohistochemistry in formalin fixed frozen section: 1:100-500

Immunohistochemistry in paraffin section: 1:50-200

Optimal working dilutions must be determined by end user.

## [ **CONTENTS** ]

**Form & Buffer:** Supplied as solution form in PBS, pH7.4, containing 0.02% NaN<sub>3</sub>, 50% glycerol.

## [ **QUALITY CONTROL** ]

**Content:** The quality control contains recombinant ADAM28 (Asp159~Lys258) disposed in loading buffer.

**Usage:** 10uL per well when 3,3'-Diaminobenzidine(DAB) as the substrate.  
5uL per well when used in enhanced chemiluminescent (ECL).

**Note:** The quality control is specifically manufactured as the positive control. Not used for other purposes.

**Loading Buffer:** 100mM Tris(pH8.8), 2% SDS, 200mM NaCl, 50% glycerol, BPB 0.01%, NaN<sub>3</sub> 0.02%.

## [ **STORAGE** ]

Store at 4°C for frequent use. Stored at -20°C to -80°C in a manual defrost freezer for one year without detectable loss of activity. Avoid repeated freeze-thaw cycles.