

A98901Ra01
Polyclonal Antibody to Colled Coil Domain Containing Protein 80 (CCDC80)
Instruction manual

FOR IN VITRO USE AND RESEARCH USE ONLY
NOT FOR USE IN CLINICAL DIAGNOSTIC PROCEDURES

5th Edition (Revised in January, 2013)

[PRODUCT INFORMATION]

Immunogen: CCDC80

Clonality: Polyclonal

Host: Rabbit

Species Reactivity: Rat

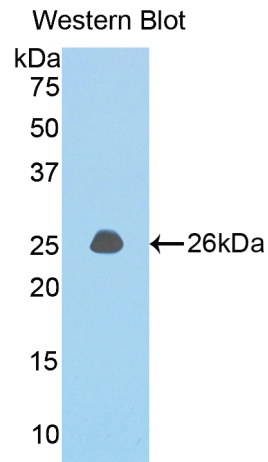
Ig type: Rabbit IgG

Purification: Antibodies are purified by target protein affinity chromatography.

Applications: WB, ICC, IHC-P, IHC-F

Form: Liquid

Size: 100µg



Sample: Recombinant rat CCDC80

[IMMUNOGEN INFORMATION]




Immunogen: Recombinant rat CCDC80 (Val82~Gly288) expressed in *E.coli*.

Molecular Weight: 24.8kDa

USCN accession No.: P98901Ra01

Sequence: The target protein is fused with N-terminal His-Tag and its sequence is listed below.

MGHHHHHSGSEF- VLRLAHTV RPPPSGINGA PVRPELKPIA RGSASEMVRD
EGSSARTRML RFPSGSSSPN ILASFAGKNR VWVISAPHAS EGYRLLMMSL LKDDVYCELA
ERHIQQIVLF HQAGEEGGKV RRITSEGGQIL EQPLDPNLIP KLMSFLKLEK GKFSMVLLKK
TLQVEERYPY PVRLEAMYEV IDQGPIIRRIE KIRQKGFVQK CKASGIEG

Unique product Superb quality Client favorite Nicest service  ISO9001:2008 ;  ISO13485:2003 ; 

[ANTIBODY SPECIFICITY]

Anti CCDC80 is a rabbit polyclonal antibody raised against rat CCDC80. This antibody has been selected for its ability to recognize rat CCDC80 in immunohistochemical staining and western blotting, non cross-reactive with other members of the family.

[APPLICATIONS]

Western blotting: 1:100-400

Immunocytochemistry in formalin fixed cells: 1:100-500

Immunohistochemistry in formalin fixed frozen section: 1:100-500

Immunohistochemistry in paraffin section: 1:50-200

Optimal working dilutions must be determined by end user.

[CONTENTS]

Form & Buffer: Supplied as solution form in PBS, pH 7.4, containing 0.02%Na₃N, 50% glycerol.

[QUALITY CONTROL]

Content: The quality control contains recombinant rat CCDC80 (Val82~Gly288) disposed in loading buffer.

Usage: 10uL per well when 3,3'-Diaminobenzidine(DAB) as the substrate.

5uL per well when used in enhanced chemiluminescent (ECL).

Note: The quality control is specifically manufactured as the positive control. Not used for other purposes.

Loading buffer: 100mM Tris(PH 8.8), 2%SDS, 200mM NaCl, 50% glycerol, BPB 0.01%, Na₃N 0.02%.

[STORAGE]

Store at 4°C for frequent use. Stored at -20°C to -80°C in a manual defrost freezer for one year without detectable loss of activity. Avoid repeated freeze-thaw cycles.