

A97756Mu01

Polyclonal Antibody to Klotho Beta (KLb)

Instruction manual

FOR IN VITRO USE AND RESEARCH USE ONLY
NOT FOR USE IN CLINICAL DIAGNOSTIC PROCEDURES

5th Edition (Revised in January, 2013)

[PRODUCT INFORMATION]

Immunogen: KLb

Clonality: Polyclonal

Host: Rabbit

Species Reactivity: Mouse

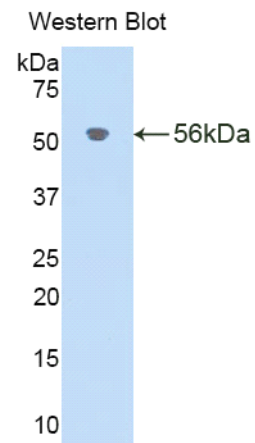
Ig type: Rabbit IgG

Purification: Antibodies are purified by target protein affinity chromatography.

Applications: WB, ICC, IHC-P, IHC-F

Form: Liquid

Size: 100µg



Sample: Recombinant mouse KLb

[IMMUNOGEN INFORMATION]




Immunogen: Recombinant mouse KLb (Met515~Leu965) expressed in *E.coli*.

Molecular Weight: 53.9kDa

USCN accession No.: P97756Mu01

Sequence: The target protein is fused with N-terminal His-Tag and its sequence is listed below.

MGHHHHHHSGSEF- MKGRFP CDFSWGVTES VLKPEFTVSS PQFTDPHLYV
WNVTGNRLLY RVEGVRLKTR PSQCTDYVSI KKRVEMLAKM KVTHYQFALD WTSILPTGNL
SKVNRQVRLRY YRCVWSEGLK LGVFPMVTLY HPTHSHLGLP LPLLSSGGWL NMNTAKAFQD
YAELCFRELG DLVKLWITIN EPNRLSDMYN RTSNDTYRAA HNLMIHAHAQV WHLYDRQYRP
VQHGAVSLSL HCDWAEPANP FVDSHWKAEE RFLQFEIAWF ADPLFKTGDY PSVMKEYIAS
KNQRGLSSSV LPRFTAKESR LVKGTVDIFY LNHFTRFVI HKQLNTNRSV ADRDVQFLQD

Unique product Superb quality Client favorite Nicest service  **ISO9001:2008**;  **ISO13485:2003**;  **CE**

ITRLSSPSRL AVTPWGVRLK LAWIRRNRYRD RDIYITANGI DDLALEDQI RKYYLEKYVQ
EALKAYLIDK VKIKGYAFK LTEEKSKPRF GFFTSDFRAK SSVQFYSKLI SSSGL

[ANTIBODY SPECIFICITY]

Anti KLb is a rabbit polyclonal antibody raised against mouse KLb. This antibody has been selected for its ability to recognize mouse KLb in immunohistochemical staining and western blotting, non cross-reactive with other members of the family.

[APPLICATIONS]

Western blotting: 1:100-400

Immunocytochemistry in formalin fixed cells: 1:100-500

Immunohistochemistry in formalin fixed frozen section: 1:100-500

Immunohistochemistry in paraffin section: 1:50-200

Optimal working dilutions must be determined by end user.

[CONTENTS]

Form & Buffer: Supplied as solution form in PBS, pH 7.4, containing 0.02%Na₃N, 50% glycerol.

[QUALITY CONTROL]

Content: The quality control contains recombinant mouse KLb (Met515~Leu965) disposed in loading buffer.

Usage: 10uL per well when 3,3'-Diaminobenzidine(DAB) as the substrate.

5uL per well when used in enhanced chemiluminescent (ECL).

Note: The quality control is specifically manufactured as the positive control. Not used for other purposes.

Loading buffer: 100mM Tris(PH 8.8), 2%SDS, 200mM NaCl, 50% glycerol, BPB 0.01%, Na₃N 0.02%.

[STORAGE]

Store at 4°C for frequent use. Stored at -20°C to -80°C in a manual defrost freezer for one year without detectable loss of activity. Avoid repeated freeze-thaw cycles.