

PAH108Hu01

Polyclonal Antibody to SULF1fatase 1 (SULF1)

Organism Species: Homo sapiens (Human)

Instruction manual

FOR IN VITRO USE AND RESEARCH USE ONLY

NOT FOR USE IN CLINICAL DIAGNOSTIC PROCEDURES

[**PRODUCT INFORMATION**]

Immunogen: SULF1, Human

Clonality: Polyclonal

Host: Rabbit

Immunoglobulin Type: IgG

Purification: Affinity Chromatography.

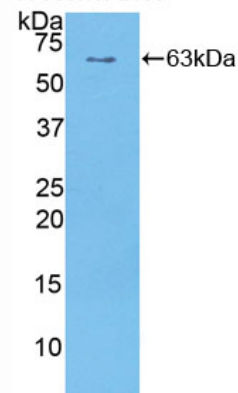
Applications: WB, ICC, IHC-P, IHC-F, ELISA

Concentration: 200µg/mL

UOM: 100µg

9th Edition (Revised in Jul, 2013)

Western Blot



Sample: Recombinant SULF1, Human

[**IMMUNOGEN INFORMATION**]

Immunogen: Recombinant SULF1 (Pro609~Gly871) expressed in *E.coli*.

Accession No.: RPH108Hu01

Sequence: The target protein is fused with two N-terminal Tags, His-tag and GST-tag and its sequence is listed below.

MSPILGYWKI KGLVQPTRL L LEYLEEKYEE HLYERDEGDK WRNKKFELGL EFPNLPYYID
GDVKLTQSMA IIRYIADKHN MLGGCPKERA EISMLEGAVL DIRYGVSR IA YSKDFETLKV
DFLSKLP EML KMFEDRLCHK TYLNGDHVTH PDFMLYDALD VVLYMDPMCL DAFPKLVCFK
KRIEAIQID KYLKSSKYIA WPLQG WQATF GGGDHPKSD GSTSGSGHHH HHSAGLVPR
GSTAIGMKET AAKFERQHM DSPDLGTLEV LFQGPLGSEF- PT TVRVTHKCFI
LPNDSIHCER ELYQSARAWK DHKAYIDKEI EALQDKIKNL REVRGHLKRR KPEECSCSKQ
SYYNKEKGVK KQEKLKSHLH PFKEAAQ EVD SKLQLFKENN RRRKKERKEK

RRQRKGEECS LPGLTCFTHD NNHWQTAPFW NLGSFCACTS SNNNTYWCLR
TVNETHNFLF CEFATGFLEY FDMNTDPYQL TNTVHTVERG ILNQLHVQLM ELRSCQGYKQ
CNP RPKNLDV GNKDGGSYDL HRGQLWDGWE G

[ANTIBODY SPECIFICITY]

The antibody is a rabbit polyclonal antibody raised against SULF1. It has been selected for its ability to recognize SULF1 in immunohistochemical staining and western blotting.

[APPLICATIONS]

Western blotting: 1:50-400

Immunocytochemistry in formalin fixed cells: 1:50-500

Immunohistochemistry in formalin fixed frozen section: 1:50-500

Immunohistochemistry in paraffin section: 1:10-100

Enzyme-linked Immunosorbent Assay: 1:100-200

Optimal working dilutions must be determined by end user.

[CONTENTS]

Form & Buffer: Supplied as solution form in PBS, pH7.4, containing 0.02% NaN₃, 50% glycerol.

[QUALITY CONTROL]

Content: The quality control contains recombinant SULF1 (Pro609~Gly871) disposed in loading buffer.

Usage: 10uL per well when 3,3'-Diaminobenzidine(DAB) as the substrate.
5uL per well when used in enhanced chemiluminescent (ECL).

Note: The quality control is specifically manufactured as the positive control. Not used for other purposes.

Loading Buffer: 100mM Tris(pH8.8), 2% SDS, 200mM NaCl, 50% glycerol, BPB 0.01%, NaN₃ 0.02%.

[STORAGE]

Store at 4°C for frequent use. Stored at -20°C to -80°C in a manual defrost freezer for one year without detectable loss of activity. Avoid repeated freeze-thaw cycles.