

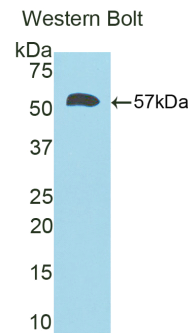
A96438Mu01
Polyclonal Antibody to Calbindin(CALB)
Organism: Mus musculus (Mouse)
Instruction manual

FOR IN VITRO USE AND RESEARCH USE ONLY
NOT FOR USE IN CLINICAL DIAGNOSTIC PROCEDURES

6th Edition (Revised in March, 2013)

[PRODUCT INFORMATION]

Immunogen: CALB, Mouse
Clonality: Polyclonal
Host: Rabbit
Immunoglobulin Type: IgG
Purification: Affinity Chromatography.
Applications: WB, ICC, IHC-P, IHC-F
Concentration: 200µg/mL
UOM: 100µg






Sample: Recombinant CALB, Mouse

[IMMUNOGEN INFORMATION]

Immunogen: Recombinant CALB (Glu3~Asn261) expressed in *E. coli*.
USCN Accession No.: P96438Mu01

Sequence: The target protein is fused with two N-terminal Tags, His-tag and GST-tag and its sequence is listed below.

MRNKKFELGL EFPNLPYYID GDVKLTQ SMA IIRYIADKHN MLGGCPKERA EISMLEGAVL
DIRYGVSR IA YSKDFETLKV DFLSKLPEML KMFEDRLCHK TYLNGDHVTH PDFMLYDALD
VVLYMDPMCL DAFPKLVCFK KR IEAIPQID KYLKSSKYIA WPLQG WQATF GGGDHPKSD
GSTSGSGHHH HHHSAGLVPR GSTAIGMKET AAKFERQHM DSPDLGTLEV L FQ GPLGS-
ESHLQSSL ITASQFFEIW LHFADGSGY LEGKELQNLI QELLQARKKA GLELSPMK S
FVDQY GQRDD GKIGIVELAH VLPTEENFLL LFRCQQLKSC EEFMKTWRKY DTDHSGFIET
EELKNFLKDL LEKANKTVDD TKLAEYTDLM LKLFDSNNDG KLELTEMARL LPVQENFLK
FQGIKMCGKE FNKAFELYDQ DGNGYIDENE LDALLKDLCE KNKQELDINN
ITTYKKNIMALSDGGKLYRT DLALILSAGD N

Unique product Superb quality Client favorite Nicest service  **ISO9001:2008**;  **ISO13485:2003**; 

[ANTIBODY SPECIFICITY]

The antibody is a rabbit polyclonal antibody raised against CALB. It has been selected for its ability to recognize CALB in immunohistochemical staining and western blotting.

[APPLICATIONS]

Western blotting: 1:100-400

Immunocytochemistry in formalin fixed cells: 1:100-500

Immunohistochemistry in formalin fixed frozen section: 1:100-500

Immunohistochemistry in paraffin section: 1:50-200

Optimal working dilutions must be determined by end user.

[CONTENTS]

Form & Buffer: Supplied as solution form in PBS, pH7.4, containing 0.02% NaN₃, 50% glycerol.

[QUALITY CONTROL]

Content: The quality control contains recombinant CALB (Glu3~Asn261) disposed in loading buffer.

Usage: 10uL per well when 3,3'-Diaminobenzidine(DAB) as the substrate.
5uL per well when used in enhanced chemiluminescent (ECL).

Note: The quality control is specifically manufactured as the positive control. Not used for other purposes.

Loading Buffer: 100mM Tris(pH8.8), 2% SDS, 200mM NaCl, 50% glycerol, BPB 0.01%, NaN₃ 0.02%.

[STORAGE]

Store at 4°C for frequent use. Stored at -20°C to -80°C in a manual defrost freezer for one year without detectable loss of activity. Avoid repeated freeze-thaw cycles.