

**PAG316Hu03**

**Polyclonal Antibody to Corin (CRN)**

**Organism Species: Homo sapiens (Human)**

***Instruction manual***

FOR IN VITRO USE AND RESEARCH USE ONLY

NOT FOR USE IN CLINICAL DIAGNOSTIC PROCEDURES

---

---

9th Edition (Revised in Jul, 2013)

## **[ PRODUCT INFORMATION ]**

**Immunogen:** CRN, Human

**Clonality:** Polyclonal

**Host:** Rabbit

**Immunoglobulin Type:** IgG

**Purification:** Affinity Chromatography.

**Applications:** WB, ICC, IHC-P, IHC-F, ELISA

**Concentration:** 200µg/mL

**UOM:** 100µg

## **[ IMMUNOGEN INFORMATION ]**

**Immunogen:** Recombinant CRN (Arg134~Pro573) expressed in *E.coli*.

**Accession No.:** RPG316Hu03

**Sequence:** The target protein is fused with two N-terminal Tags, His-tag and T7-tag and its sequence is listed below.

MGSSHHHHHH SSSLVPRGSH MASMTGGQQM GRGSEF- RNTSACM NITHSQCQML  
PYHATLTPLL SVVRNMEMEK FLKFFTYLHR LSCYQHIMLF GCTLAFPECI IDGDDSHGLL  
PCRSFCEAAK EGCESVLGMV NYSWPDFLRC SQFRNQTESS NVSRICFSPQ  
QENGKQLLCG RGENFLCASG ICIPGKLQCN GYNDCDDWSD EAHCNCSNL  
FHCHTGKCLN YSLVCDGYDD CGDLSDEQNC DCNPTTEHRC GDGRCIAMEW  
VCDGDHDCVD KSDEVNCSCH SQGLVECRNG QCIPSTFQCD GDEDCKDGSD  
EENC SVIQTS CQEGDQRCLY NPCLDSCGGS SLCDPNNSLN NCSQCEPITL ELCMNLPYNS  
TSYPNYFGHR TQKEASISWE SSLFPALVQT NCYKYL MFFS CTILVPKCDV NTGEHIPPCR  
ALCEHSKERC ESVLGIVGLQ WPEDTDCSQF PEENSNDNQTCLMP

## **[ ANTIBODY SPECIFICITY ]**

The antibody is a rabbit polyclonal antibody raised against CRN. It has been selected for its ability to recognize CRN in immunohistochemical staining and western blotting.

## **[ APPLICATIONS ]**

Western blotting: 1:100-400

Immunocytochemistry in formalin fixed cells: 1:100-500

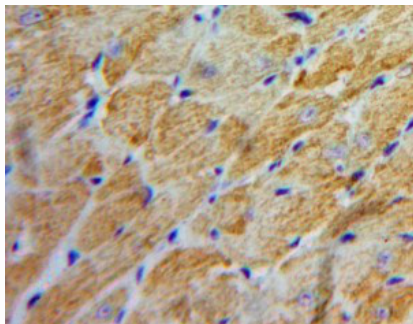
Immunohistochemistry in formalin fixed frozen section: 1:100-500

Immunohistochemistry in paraffin section: 1:50-200

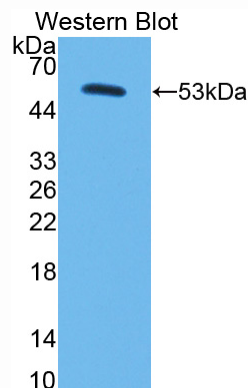
Enzyme-linked Immunosorbent Assay: 1:100-200

Optimal working dilutions must be determined by end user.

## [ IMAGES ]



Used in DAB staining on formalin fixed  
paraffin-embedded Heart tissue



Used in Western Blot, Sample:  
Recombinant CRN, Human

## [ CONTENTS ]

**Form & Buffer:** Supplied as solution form in PBS, pH7.4, containing 0.02% NaN<sub>3</sub>, 50% glycerol.

## [ QUALITY CONTROL ]

**Content:** The quality control contains recombinant CRN (Arg134~Pro573) disposed in loading buffer.

**Usage:** 10uL per well when 3,3'-Diaminobenzidine(DAB) as the substrate.  
5uL per well when used in enhanced chemiluminescent (ECL).

**Note:** The quality control is specifically manufactured as the positive control. Not used for other purposes.

**Loading Buffer:** 100mM Tris(pH8.8), 2% SDS, 200mM NaCl, 50% glycerol, BPB 0.01%, NaN<sub>3</sub> 0.02%.

## [ STORAGE ]

Store at 4°C for frequent use. Stored at -20°C to -80°C in a manual defrost freezer for one year without detectable loss of activity. Avoid repeated freeze-thaw cycles.