

**PAG316Hu01**

**Polyclonal Antibody to Corin (CRN)**

**Organism Species: Homo sapiens (Human)**

***Instruction manual***

FOR IN VITRO USE AND RESEARCH USE ONLY

NOT FOR USE IN CLINICAL DIAGNOSTIC PROCEDURES

9th Edition (Revised in Jul, 2013)

## **[ PRODUCT INFORMATION ]**

**Immunogen:** CRN, Human

**Clonality:** Polyclonal

**Host:** Rabbit

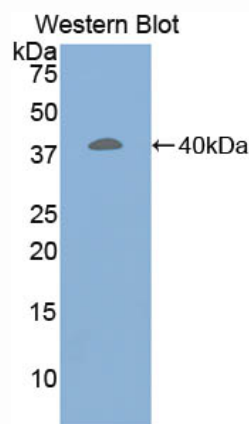
**Immunoglobulin Type:** IgG

**Purification:** Affinity Chromatography.

**Applications:** WB, ICC, IHC-P, IHC-F, ELISA

**Concentration:** 200µg/mL

**UOM:** 100µg



*Sample: Recombinant CRN, Human*

## **[ IMMUNOGEN INFORMATION ]**

**Immunogen:** Recombinant CRN (Gly70~Thr136) expressed in *E.coli*.

**Accession No.:** RPG316Hu01

**Sequence:** The target protein is fused with two N-terminal Tags, His-tag and GST-tag and its sequence is listed below.

MSPILGYWKI KGLVQPTRL L LEYLEEKYEE HLYERDEGDK WRNKKFELGL EFPNLPYYID  
GDVKLTQSMA IIRYIADKHN MLGGCPKERA EISMLEGAVL DIRYGVSR IA YSKDFETLKV  
DFLSKLP EML KMFEDRLCHK TYLNGDHVTH PDFMLYDALD VVLYMDPMCL DAFPKLVCFK  
KRIEAI PQID KYLKSSKYIA WPLQGWQATF GGDHPPKSD GSTSGSGHHH HHSAGLVPR  
GSTAIGMKET AAKFERQHM DSPDLGTGGG SGIEGRGSMG YRGSEF-G TLQKVYFKSN  
GSEPLVTDGE IQGSDVILT N TIYNQSTVVS TAHPDQHVPA WTTDASLP GD QSHRNT

## [ **ANTIBODY SPECIFICITY** ]

The antibody is a rabbit polyclonal antibody raised against CRN. It has been selected for its ability to recognize CRN in immunohistochemical staining and western blotting.

## [ **APPLICATIONS** ]

Western blotting: 1:100-400

Immunocytochemistry in formalin fixed cells: 1:100-500

Immunohistochemistry in formalin fixed frozen section: 1:100-500

Immunohistochemistry in paraffin section: 1:50-200

Enzyme-linked Immunosorbent Assay: 1:100-200

Optimal working dilutions must be determined by end user.

## [ **IMAGES** ]

Used in DAB staining on formalin fixed  
paraffin- embedded tissue

Used in Western Blot, Sample:  
Recombinant CRN, Human

## [ **CONTENTS** ]

**Form & Buffer:** Supplied as solution form in PBS, pH7.4, containing 0.02% NaN<sub>3</sub>, 50% glycerol.

## [ **QUALITY CONTROL** ]

**Content:** The quality control contains recombinant CRN (Gly70~Thr136) disposed in loading buffer.

**Usage:** 10uL per well when 3,3'-Diaminobenzidine(DAB) as the substrate.

5uL per well when used in enhanced chemiluminescent (ECL).

**Note:** The quality control is specifically manufactured as the positive control. Not used for other purposes.

**Loading Buffer:** 100mM Tris(pH8.8), 2% SDS, 200mM NaCl, 50% glycerol, BPB 0.01%,  $\text{NaN}_3$  0.02%.

## **[ STORAGE ]**

Store at 4°C for frequent use. Stored at -20°C to -80°C in a manual defrost freezer for one year without detectable loss of activity. Avoid repeated freeze-thaw cycles.