

**PAG282Hu01**

**Polyclonal Antibody to Proteasome 26S Subunit, Non ATPase 7 (PSMD7)**

**Organism Species: Homo sapiens (Human)**

***Instruction manual***

FOR IN VITRO USE AND RESEARCH USE ONLY

NOT FOR USE IN CLINICAL DIAGNOSTIC PROCEDURES

## **[ PRODUCT INFORMATION ]**

**Immunogen:** PSMD7, Human

**Clonality:** Polyclonal

**Host:** Rabbit

**Immunoglobulin Type:** IgG

**Purification:** Affinity Chromatography.

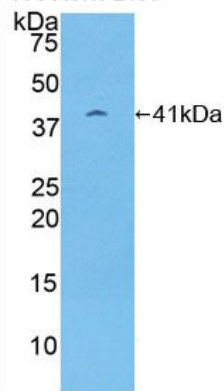
**Applications:** WB, ICC, IHC-P, IHC-F, ELISA

**Concentration:** 200µg/mL

**UOM:** 100µg

9th Edition (Revised in Jul, 2013)

Western Blot



*Sample: Recombinant PSMD7, Human*

## **[ IMMUNOGEN INFORMATION ]**

**Immunogen:** Recombinant PSMD7 (Met1~Lys324) expressed in *E.coli*.

**Accession No.:** RPG282Hu01

**Sequence:** The target protein is fused with two N-terminal Tags, His-tag and T7-tag and its sequence is listed below.

MGSSHHHHH SSGLVPRGSH MASMTGGQQM GRGSEF- MP ELAVQKV V VHPLVLLSVV  
DHFNRIGKVG NQKR VVG VLL GSWQKKVLDV SNSFAVPFDE DDKDDSVWFL  
DHDYLENMYG MFKKVNARER IVGWYHTGPK LHKNDIAINE LMKRYCPNSV LVIIDVKPKD  
LGLPTEAYIS VEEVHDDGTP TSKTFEHVTS EIGAEAEAEV GVEHLLRDIK DTTVGTL SQR  
ITNQVHGLKG LNSKLLDIRS YLEKVATGKL PINHQIYQL QDVFNLLPDV SLQEFVKAFY  
LKTNDQMVVV YLASLIRSVV ALHNLINNKI ANRDAEKKEG QEKEESKKDR KEDKEKDKDK  
EKSDVKKEEK KEKK

## **[ ANTIBODY SPECIFICITY ]**

The antibody is a rabbit polyclonal antibody raised against PSMD7. It has been selected for its ability to recognize PSMD7 in immunohistochemical staining and western blotting.

## **[ APPLICATIONS ]**

Western blotting: 1:100-400

Immunocytochemistry in formalin fixed cells: 1:100-500

Immunohistochemistry in formalin fixed frozen section: 1:100-500

Immunohistochemistry in paraffin section: 1:50-200

Enzyme-linked Immunosorbent Assay: 1:100-200

Optimal working dilutions must be determined by end user.

## **[ CONTENTS ]**

**Form & Buffer:** Supplied as solution form in PBS, pH7.4, containing 0.02% NaN<sub>3</sub>, 50% glycerol.

## **[ QUALITY CONTROL ]**

**Content:** The quality control contains recombinant PSMD7 (Met1~Lys324) disposed in loading buffer.

**Usage:** 10uL per well when 3,3'-Diaminobenzidine(DAB) as the substrate.  
5uL per well when used in enhanced chemiluminescent (ECL).

**Note:** The quality control is specifically manufactured as the positive control. Not used for other purposes.

**Loading Buffer:** 100mM Tris(pH8.8), 2% SDS, 200mM NaCl, 50% glycerol, BPB 0.01%, NaN<sub>3</sub> 0.02%.

## **[ STORAGE ]**

Store at 4°C for frequent use. Stored at -20°C to -80°C in a manual defrost freezer for one year without detectable loss of activity. Avoid repeated freeze-thaw cycles.