

pA95354Hu01
Polyclonal Antibody to Crystallin Lambda 1 (CRY11)
Organism: Homo sapiens (Human)
Instruction manual

FOR IN VITRO USE AND RESEARCH USE ONLY
NOT FOR USE IN CLINICAL DIAGNOSTIC PROCEDURES

7th Edition (Revised in May, 2013)

[PRODUCT INFORMATION]

Immunogen: CRY11, Human

Clonality: Polyclonal

Host: Rabbit

Immunoglobulin Type: IgG

Purification: Affinity Chromatography.

Applications: WB, ICC, IHC-P, IHC-F, ELISA

Concentration: 200µg/mL

UOM: 100µg

[IMMUNOGEN INFORMATION]

Immunogen: Recombinant CRY11 (Met1~Gln319) expressed in *E.coli*.

USCN Accession No.: rP95354Hu01

Sequence: The target protein is fused with two N-terminal Tags, His-tag and S-tag and its sequence is listed below.

MHHHHHSSG LVPRGSGMKE TAAAKFERQH MDSPDLGTDD DDKAMADIGS EF-
MASSAAGCVV IVGSGVIGRS WAMLFASGGF QVKLYDIEQQ QIRNALENIR KEMKLEQAG
SLKGSLSVEE QLSLISGCPN IQEAVEGAMH IQECVPEDLE LKKKIFAQLD SIIDDRVILS
SSTSCLMPSK LFAGLVHVKQ CIVAHPVNPP YYIPLVELVP HPETAPTTVD RTHALMKKIG
QCPMRVQKEV AGFVLNRLQY AISEAWRLV EEGIVSPSDL DLVMSEGLGM RYAFIGPLET
MHLNAEGMLS YCDRYSEGIK HVLQTFGPIP EFSRATAEKV NQDMCMKVPD DPEHLAARRQ
WRDECLMRLA KLKSQVQPQ

[ANTIBODY SPECIFICITY]

The antibody is a rabbit polyclonal antibody raised against CRY11. It has been selected for its ability to recognize CRY11 in immunohistochemical staining and western blotting.

[APPLICATIONS]

Western blotting: 1:100-400

Unique product Superb quality Client favorite Nicest service  ISO9001:2008;  ISO13485:2003; 

Immunocytochemistry in formalin fixed cells: 1:100-500

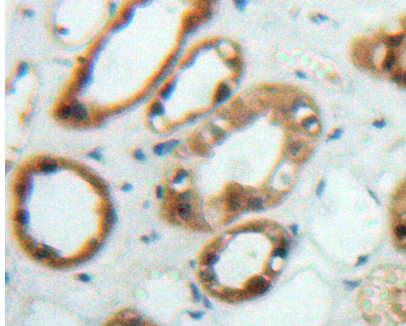
Immunohistochemistry in formalin fixed frozen section: 1:100-500

Immunohistochemistry in paraffin section: 1:50-200

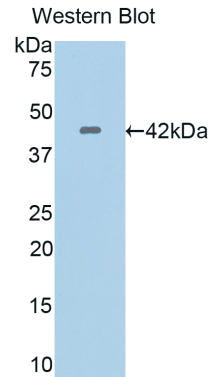
Enzyme-linked Immunosorbent Assay: 1:100-200

Optimal working dilutions must be determined by end user.

[IMAGES]



Used in DAB staining on formalin fixed paraffin-embedded kidney tissue



Used in Western Blot, Sample: Recombinant CRY11, Human

[CONTENTS]

Form & Buffer: Supplied as solution form in PBS, pH7.4, containing 0.02% NaN₃, 50% glycerol.

[QUALITY CONTROL]

Content: The quality control contains recombinant CRY11 (Met1~Gln319) disposed in loading buffer.




Usage: 10uL per well when 3,3'-Diaminobenzidine(DAB) as the substrate.
5uL per well when used in enhanced chemiluminescent (ECL).

Note: The quality control is specifically manufactured as the positive control. Not used for other purposes.

Loading Buffer: 100mM Tris(pH8.8), 2% SDS, 200mM NaCl, 50% glycerol, BPB 0.01%, NaN₃ 0.02%.

[STORAGE]

Store at 4°C for frequent use. Stored at -20°C to -80°C in a manual defrost freezer for one year without detectable loss of activity. Avoid repeated freeze-thaw cycles.

Unique product Superb quality Client favorite Nicest service  ISO9001:2008;  ISO13485:2003;  CE