

PAF320Mu01

Polyclonal Antibody to Carboxypeptidase B1, Tissue (CPB1)

Organism Species: *Mus musculus* (Mouse)

Instruction manual

FOR IN VITRO USE AND RESEARCH USE ONLY
NOT FOR USE IN CLINICAL DIAGNOSTIC PROCEDURES

9th Edition (Revised in Jul, 2013)

[**PRODUCT INFORMATION**]

Immunogen: CPB1, Mouse

Clonality: Polyclonal

Host: Rabbit

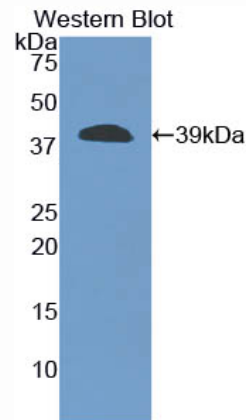
Immunoglobulin Type: IgG

Purification: Affinity Chromatography.

Applications: WB, ICC, IHC-P, IHC-F, ELISA

Concentration: 200µg/mL

UOM: 100µg



Sample: Recombinant CPB1, Mouse

[**IMMUNOGEN INFORMATION**]

Immunogen: Recombinant CPB1 (Ala109~Tyr415) expressed in *E.coli*.

Accession No.: RPF320Mu01

Sequence: The target protein is fused with two N-terminal Tags, His-tag and T7-tag and its sequence is listed below.

MGSSHHHHHH SGLVPRGSH MASMTGGQQM GRGSEF- AS GHSYTKYNNW
ETIEAWIQQV ANDNPDLVSK RVIGTTFEGR NMYVLKIGKD RPNKPAFFID CGFHAREWIS
PAFCQWFVRE AVRTYKQEIH MKRLLDELDF YVLPVVDID YVYTWAKDRM WRKTRSTTAG
SSCFGVDPNR NFDAGWCEVG ASRSPCSDTY CGPTPESEKE TKALADFIRQ NLSSIKAYLT
VHSYSQMMMLY PYSYDYKLPE NYEELNALVK GAAKELSTLH GTKYTYGPGA TTIYPAAGGS
DDWAYDQGIK YSFTFELRDK GFFGFLLPES QIRQTCEETM LAVKYIANYV LEHPY

[ANTIBODY SPECIFICITY]

The antibody is a rabbit polyclonal antibody raised against CPB1. It has been selected for its ability to recognize CPB1 in immunohistochemical staining and western blotting.

[APPLICATIONS]

Western blotting: 1:100-400

Immunocytochemistry in formalin fixed cells: 1:100-500

Immunohistochemistry in formalin fixed frozen section: 1:100-500

Immunohistochemistry in paraffin section: 1:50-200

Enzyme-linked Immunosorbent Assay: 1:100-200

Optimal working dilutions must be determined by end user.

[CONTENTS]

Form & Buffer: Supplied as solution form in PBS, pH7.4, containing 0.02% NaN_3 , 50% glycerol.

[QUALITY CONTROL]

Content: The quality control contains recombinant CPB1 (Ala109~Tyr415) disposed in loading buffer.

Usage: 10uL per well when 3,3'-Diaminobenzidine(DAB) as the substrate.

5uL per well when used in enhanced chemiluminescent (ECL).

Note: The quality control is specifically manufactured as the positive control. Not used for other purposes.

Loading Buffer: 100mM Tris(pH8.8), 2% SDS, 200mM NaCl, 50% glycerol, BPB 0.01%, NaN_3 0.02%.

[STORAGE]

Store at 4°C for frequent use. Stored at -20°C to -80°C in a manual defrost freezer for one year without detectable loss of activity. Avoid repeated freeze-thaw cycles.