



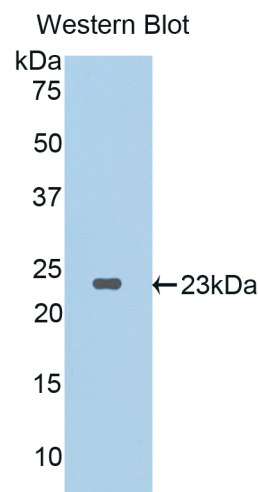
**A94842Hu01**  
**Polyclonal Antibody to Interleukin 1 Zeta (IL1z)**  
**Instruction manual**

FOR IN VITRO USE AND RESEARCH USE ONLY  
NOT FOR USE IN DIAGNOSTIC OR THERAPEUTIC PROCEDURES

4th Edition (Revised in September, 2012)

**[ PRODUCT INFORMATION ]**

**Immunogen:** IL1z  
**Clonality:** Polyclonal  
**Host:** Rabbit  
**Species Reactivity:** Human  
**Ig type:** Rabbit IgG  
**Purification:** Antibodies are purified by target protein affinity chromatography.  
**Applications:** WB, ICC, IHC-P, IHC-F  
**Form:** Liquid  
**Size:** 100µg



*Sample: Recombinant human IL1z*

**[ IMMUNOGEN INFORMATION ]**

**Immunogen:** Recombinant human IL1z (Lys27~Asp192) expressed in *E.coli*.

**Molecular Weight:** 22.4 kDa

**USCN accession No.:** P94842Hu01

**Sequence:** The target protein is fused with two N-terminal Tags, His-tag and T7-tag and its sequence is listed below.

MGSSHHHHHHSSGLVPRGSHMASMTGGQQMGRGSEF-KNLN PKKFSIHDQD HKVLVLDLSDG LIAVDPKNYI RPEIFFALAS  
SLSSASAIEKG SPILLGVSKG EFCLYCDKDK GQSHPSLQLK KEKLMKLAQ KESARRPFIF YRAQVGSWNM LESAAHPGWF  
ICTSCNCNEP VGVTDKFNENR KHIEFSFQPV CKAEMSPSEV SD



## **[ ANTIBODY SPECIFICITY ]**

Anti IL1z is a rabbit polyclonal antibody raised against human IL1z. This antibody has been selected for its ability to recognize human IL1z in immunohistochemical staining and western blotting, non cross-reactive with other members of the family.

## **[ APPLICATIONS ]**

Western blotting: 1:100-400

Immunocytochemistry in formalin fixed cells: 1:100-500

Immunohistochemistry in formalin fixed frozen section: 1:100-500

Immunohistochemistry in paraffin section: 1:50-200

Optimal working dilutions must be determined by end user.

## **[ CONTENTS ]**

**Form & Buffer:** Supplied as solution form in PBS, pH 7.4, containing 0.02%Na<sub>3</sub>N, 50% glycerol.

## **[ STORAGE ]**

Store at 4°C for frequent use. Stored at -20°C to -80°C in a manual defrost freezer for one year without detectable loss of activity. Avoid repeated freeze-thaw cycles.

