

**PAE837Hu01****Polyclonal Antibody****To Aldehyde Dehydrogenase 7 Family, Member A1 (ALDH7A1)****Organism Species: Homo sapiens (Human)*****Instruction manual***

FOR IN VITRO USE AND RESEARCH USE ONLY

NOT FOR USE IN CLINICAL DIAGNOSTIC PROCEDURES

9th Edition (Revised in Jul, 2013)

**[ PRODUCT INFORMATION ]****Immunogen:** ALDH7A1, Human**Clonality:** Polyclonal**Host:** Rabbit**Immunoglobulin Type:** IgG**Purification:** Affinity Chromatography.**Applications:** WB, ICC, IHC-P, IHC-F, ELISA**Concentration:** 200µg/mL**UOM:** 100µg**[ IMMUNOGEN INFORMATION ]****Immunogen:** Recombinant ALDH7A1 (Met1~Gln539) expressed in *E.coli*.**Accession No.:** RPE837Hu01**Sequence:** The target protein is fused with N-terminal His-Tag and its sequence is listed below.

MGHHHHHHSGS-MWRLPRALCV HAAKTSKLSG PWSRPAAFMS TLLINQPQYA  
WLKELGLREE NEGVYNGSWG GRGEVITYC PANNEPIARV RQASVADYEE TVKKAREAWK  
IWADIPAPKR GEIVRQIGDA LREKIQVLGS LVSLEMGKIL VEGVGEVQEY VDICDYAVGL  
SRMIGGPILP SERSGHALIE QWNPVGLVGI ITAFNFPVAV YGWNNAIAMI CGNVCLWKGA  
PTTSLISVAV TKIIAKVLED NKLPGAICSL TCGGADIGTA MAKDERVNLL SFTGSTQV GK  
QVGLMVQERF GRSLLELGGN NAIIFEDAD LSLVVPSELF AAVGTAGQRC TTARRLFIHE  
SIHDEVVNRL KKAYAQIRVG NPWDPNVLYG PLHTKQAVSM FLGAVEEAKK EGGTVVYGGK  
VMDRPGNYVE PTIVTGLGHD ASIAHTETFA PILYVFKFKN EEEVFAWNE VKQGLSSSIF  
TKDLGRIFRW LGPKGSDCGI VNVNIPTSGA EIGGAFGG EK HTGGGREGSGS  
DAWKQYMRRS TCTINYSKDL PLAQGIK FQ

**[ ANTIBODY SPECIFICITY ]**

The antibody is a rabbit polyclonal antibody raised against ALDH7A1. It has been selected for its ability to recognize ALDH7A1 in immunohistochemical staining and

western blotting.

## [ APPLICATIONS ]

Western blotting: 1:100-400

Immunocytochemistry in formalin fixed cells: 1:100-500

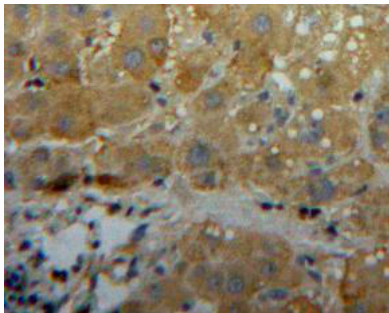
Immunohistochemistry in formalin fixed frozen section: 1:100-500

Immunohistochemistry in paraffin section: 1:50-200

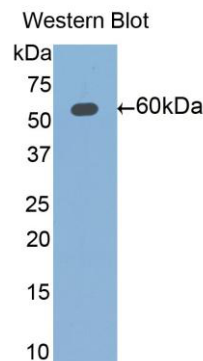
Enzyme-linked Immunosorbent Assay: 1:100-200

Optimal working dilutions must be determined by end user.

## [ IMAGES ]



Used in DAB staining on formalin fixed  
paraffin-embedded liver tissue



Used in Western Blot, Sample:  
Recombinant ALDH7A1, Human

## [ CONTENTS ]

**Form & Buffer:** Supplied as solution form in PBS, pH7.4, containing 0.02% NaN<sub>3</sub>, 50% glycerol.

## [ QUALITY CONTROL ]

**Content:** The quality control contains recombinant ALDH7A1 (Met1~Gln539) disposed in loading buffer.

**Usage:** 10uL per well when 3,3'-Diaminobenzidine(DAB) as the substrate.  
5uL per well when used in enhanced chemiluminescent (ECL).

**Note:** The quality control is specifically manufactured as the positive control. Not used for other purposes.

**Loading Buffer:** 100mM Tris(pH8.8), 2% SDS, 200mM NaCl, 50% glycerol, BPB 0.01%, NaN<sub>3</sub> 0.02%.

**[ STORAGE ]**

Store at 4°C for frequent use. Stored at -20°C to -80°C in a manual defrost freezer for one year without detectable loss of activity. Avoid repeated freeze-thaw cycles.