

PAE002Ra01

Polyclonal Antibody to CREB Binding Protein (CREBBP)

Organism Species: *Rattus norvegicus* (Rat)

Instruction manual

FOR IN VITRO USE AND RESEARCH USE ONLY
NOT FOR USE IN CLINICAL DIAGNOSTIC PROCEDURES

9th Edition (Revised in Jul, 2013)

[PRODUCT INFORMATION]

Immunogen: CREBBP, Rat

Clonality: Polyclonal

Host: Rabbit

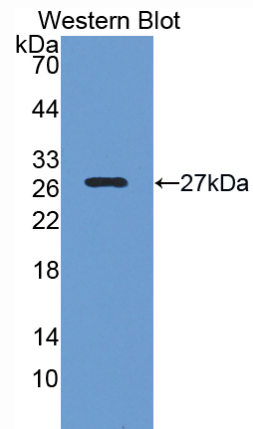
Immunoglobulin Type: IgG

Purification: Affinity Chromatography.

Applications: WB, ICC, IHC-P, IHC-F, ELISA

Concentration: 200µg/mL

UOM: 50µg



Sample: Recombinant CREBBP, Rat

[IMMUNOGEN INFORMATION]

Immunogen: Recombinant CREBBP (Gln2216~Leu2442) expressed in *E.coli*.

Accession No.: RPE002Ra01

Sequence: The target protein is fused with N-terminal His-Tag and its sequence is listed below.

MGHHHHHHSGSEF-QQSSA SLAGGMAGHS QFQQPQGPGG YAPAMQQQRM
QQHLP IQGSS MGQMAAPMGQ LGQMGQPGLG ADSTPNIQQA LQQRILQQQQ
MKQQIGSPGQ PNPMSPPQHM LSGQPQASHL PGQQIATSLS NQVRSPAPVQ
SPRPQSQPPH SSPSPRIQPQ PSPHHVSPQT GSPHPGLAVT MASSMDQGHL
GNPEQSAML P QLNTPNRSAL SSEL SLVGDT TGD TLEKFVE GL

[ANTIBODY SPECIFICITY]

The antibody is a rabbit polyclonal antibody raised against CREBBP. It has been selected for its ability to recognize CREBBP in immunohistochemical staining and western blotting.

[APPLICATIONS]

Western blotting: 1:50-400

Immunocytochemistry in formalin fixed cells: 1:50-500

Immunohistochemistry in formalin fixed frozen section: 1:50-500

Immunohistochemistry in paraffin section: 1:10-100

Enzyme-linked Immunosorbent Assay: 1:100-200

Optimal working dilutions must be determined by end user.

[CONTENTS]

Form & Buffer: Supplied as solution form in PBS, pH7.4, containing 0.02% NaN₃, 50% glycerol.

[QUALITY CONTROL]

Content: The quality control contains recombinant CREBBP (Gln2216~Leu2442) disposed in loading buffer.

Usage: 10uL per well when 3,3'-Diaminobenzidine(DAB) as the substrate.

5uL per well when used in enhanced chemiluminescent (ECL).

Note: The quality control is specifically manufactured as the positive control. Not used for other purposes.

Loading Buffer: 100mM Tris(pH8.8), 2% SDS, 200mM NaCl, 50% glycerol, BPB 0.01%, NaN₃ 0.02%.

[STORAGE]

Store at 4°C for frequent use. Stored at -20°C to -80°C in a manual defrost freezer for one year without detectable loss of activity. Avoid repeated freeze-thaw cycles.