

PAD761Ra01

Polyclonal Antibody to Glutamine synthetase (GS)**Organism Species: *Rattus norvegicus* (Rat)*****Instruction manual***

FOR IN VITRO USE AND RESEARCH USE ONLY

NOT FOR USE IN CLINICAL DIAGNOSTIC PROCEDURES

9th Edition (Revised in Jul, 2013)

[PRODUCT INFORMATION]**Immunogen:** GS, Rat**Clonality:** Polyclonal**Host:** Rabbit**Immunoglobulin Type:** IgG**Purification:** Affinity Chromatography.**Applications:** WB, ICC, IHC-P, IHC-F, ELISA**Concentration:** 200µg/mL**UOM:** 100µg**[IMMUNOGEN INFORMATION]****Immunogen:** Recombinant GS (Met1~Asn373) expressed in *E.coli*.**Accession No.:** RPD761Ra01**Sequence:** The target protein is fused with N-terminal His-Tag and its sequence is listed below.

MGHHHHHSG SEFELRRQ-MATSASSHLN KGKQMYMNL PQGEKIQLMY IWVDGTGEG
RCKTRTLDCD PKCVEELPEW NFDGSSTFQS EGSNSDMYLH PVAMFRDPFR
RDPNKLVFCE VFYNRKPAE TNLRHCKRI MDMVSSQHPW FGMEQEYTLM
GTDGHPFGWP SNGFPGQGP YYCGVGADKA YGRDIVEAHY RACLYAGIKI
TGTAENVMPA QWEFQIGPCE GIRMGDHLWV ARFILHRVCE DFGVIATFDP KPIPGNWN
GCHTNFSTKA MREENGLRCI EEAIKLSKR HQYHIRAYDP KGGLDNARRL TGFHETS
NIN DFSAGVANRS ASIRIPRIVG QEKKGYFEDR RPSANCDPYA VTEAIVRTCL LNETGDE
PFQ YKN

[ANTIBODY SPECIFICITY]

The antibody is a rabbit polyclonal antibody raised against GS. It has been selected for its ability to recognize GS in immunohistochemical staining and western blotting.

[APPLICATIONS]

Western blotting: 1:100-400

Immunocytochemistry in formalin fixed cells: 1:100-500

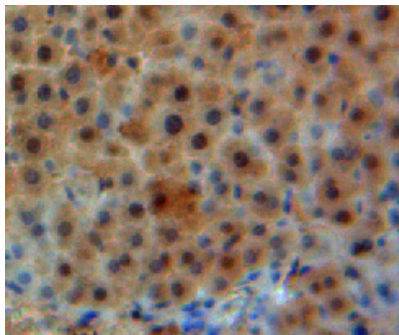
Immunohistochemistry in formalin fixed frozen section: 1:100-500

Immunohistochemistry in paraffin section: 1:50-200

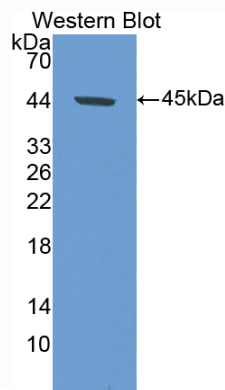
Enzyme-linked Immunosorbent Assay: 1:100-200

Optimal working dilutions must be determined by end user.

[IMAGES]



Used in DAB staining on formalin fixed
paraffin- embedded liver tissue



Used in Western Blot ,Sample:
Recombinant GS,Rat

[CONTENTS]

Form & Buffer: Supplied as solution form in PBS, pH7.4, containing 0.02% NaN₃, 50% glycerol.

[QUALITY CONTROL]

Content: The quality control contains recombinant GS (Met1~Asn373) disposed in loading buffer.

Usage: 10uL per well when 3,3'-Diaminobenzidine(DAB) as the substrate.
5uL per well when used in enhanced chemiluminescent (ECL).

Note: The quality control is specifically manufactured as the positive control. Not used for other purposes.

Loading Buffer: 100mM Tris(pH8.8), 2% SDS, 200mM NaCl, 50% glycerol, BPB 0.01%, NaN₃ 0.02%.

[STORAGE]

Store at 4°C for frequent use. Stored at -20°C to -80°C in a manual defrost freezer for one year without detectable loss of activity. Avoid repeated freeze-thaw cycles.