

**pA93715Hu01**

**Polyclonal Antibody to Killer Cell Immunoglobulin Like Receptor 2DL2 (KIR2DL2)**

**Organism: Homo sapiens (Human)**

***Instruction manual***

FOR IN VITRO USE AND RESEARCH USE ONLY

NOT FOR USE IN CLINICAL DIAGNOSTIC PROCEDURES

7th Edition (Revised in May, 2013)

**[ PRODUCT INFORMATION ]**

**Immunogen:** KIR2DL2, Human

**Clonality:** Polyclonal

**Host:** Rabbit

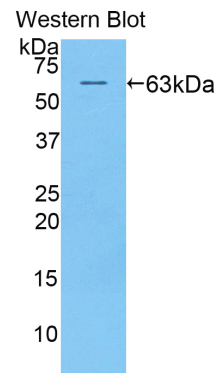
**Immunoglobulin Type:** IgG

**Purification:** Affinity Chromatography.

**Applications:** WB, ICC, IHC-P, IHC-F, ELISA

**Concentration:** 200µg/mL

**UOM:** 100µg



*Sample: Recombinant KIR2DL2, Human*




**[ IMMUNOGEN INFORMATION ]**

**Immunogen:** Recombinant KIR2DL2 (His22~Pro348) expressed in *E.coli*.

**USCN Accession No.:** rP93715Hu01

**Sequence:** The target protein is fused with two N-terminal Tags, His-tag and GST-tag and its sequence is listed below.

MRNKKFELGL EFPNLPYYID GDVKLTQSMA IIRYIADKHN MLGGCPKERA EISMLEGAVL  
DIRYGVSRIA YSKDFETLKV DFLSKLPEML KMFEDRLCHK TYLNGDHVTH PDFMLYDALD  
VVLYMDPMCL DAFPKLVCVK KRIEAIQID KYLKSSKYIA WPLQGWQATF GGGDHPKSD  
GSTSGSGHHH HHHSAGLVPR GSTAIGMKET AAKFERQHM DSPDLGTLEV  
LFQGPLGS-HEGVHRKPS LLAHPGRLVK SEETVILQCW SDVRFEFHLL HREGKFKDTL  
HLIGEHHDG V SKANFSIGPM MQDLAGTYRC YGSVTHSPYQ LSAPSDPLDIVITGLYEKPS  
LSAQPGPTVL AGESVTLSCS SRSSYDMYHL SREGEAHECR FSAGPKVNGT FQADFPLGPA

***Unique product Superb quality Client favorite Nicest service***  ISO9001:2008 ;  ISO13485:2003 ; 

THGGTYRCFG SFRDSPYEWS NSSDPLLVSV IGNPNSWPS PTEPSSKTGN PRHLHILIGT  
SVVILFILL FLLHRWCSN KKNAAVMDQE SAGNRTANSE DSDEQDPQEV TYTQLNHCVF  
TQRKITRPSQ RPKTPPTDII VYAELPNAES RSKVVSCP

## [ ANTIBODY SPECIFICITY ]

The antibody is a rabbit polyclonal antibody raised against KIR2DL2. It has been selected for its ability to recognize KIR2DL2 in immunohistochemical staining and western blotting.

## [ APPLICATIONS ]

Western blotting: 1:100-400

Immunocytochemistry in formalin fixed cells: 1:100-500

Immunohistochemistry in formalin fixed frozen section: 1:100-500

Immunohistochemistry in paraffin section: 1:50-200

Enzyme-linked Immunosorbent Assay: 1:100-200

Optimal working dilutions must be determined by end user.

## [ CONTENTS ]

**Form & Buffer:** Supplied as solution form in PBS, pH7.4, containing 0.02% NaN<sub>3</sub>, 50% glycerol.

## [ QUALITY CONTROL ]

**Content:** The quality control contains recombinant KIR2DL2 (His22~Pro348) disposed in loading buffer.

**Usage:** 10uL per well when 3,3'-Diaminobenzidine(DAB) as the substrate.  
5uL per well when used in enhanced chemiluminescent (ECL).

**Note:** The quality control is specifically manufactured as the positive control. Not used for other purposes.

**Loading Buffer:** 100mM Tris(pH8.8), 2% SDS, 200mM NaCl, 50% glycerol, BPB 0.01%, NaN<sub>3</sub> 0.02%.

## [ STORAGE ]

Store at 4°C for frequent use. Stored at -20°C to -80°C in a manual defrost freezer for one year without detectable loss of activity. Avoid repeated freeze-thaw cycles.

*Unique product Superb quality Client favorite Nicest service*  ISO9001:2008;  ISO13485:2003; 