

PAD540Mu01

Polyclonal Antibody to Cytochrome P450 26A1 (CYP26A1)

Organism Species: *Mus musculus* (Mouse)

Instruction manual

FOR IN VITRO USE AND RESEARCH USE ONLY

NOT FOR USE IN CLINICAL DIAGNOSTIC PROCEDURES

9th Edition (Revised in Jul, 2013)

[PRODUCT INFORMATION]

Immunogen: CYP26A1, Mouse

Clonality: Polyclonal

Host: Rabbit

Immunoglobulin Type: IgG

Purification: Affinity Chromatography.

Applications: WB, ICC, IHC-P, IHC-F, ELISA

Concentration: 200µg/mL

UOM: 100µg

[IMMUNOGEN INFORMATION]

Immunogen: Recombinant CYP26A1 (Asn250~Gly495) expressed in *E.coli*.

Accession No.: RPD540Mu01

Sequence: The target protein is fused with two N-terminal Tags, His-tag and T7-tag and its sequence is listed below.

MGSSHHHHHH SSSLVPRGSH MASMTGGQQM GRGSEF- N IRAKIRRLQA TEPDGGCKDA
LQLLIEHSWE RGERLDMQAL QQSSTELLFG GHETTASAAT SLITYLGLYP HVLQKVREEI
KSKGLLCKSN QDNKLDMETL EQLKYIGCVI KETLRLNPPV PGGFRVALKT FELNGYQIPK
GWNVIYSICD THDVADIFTN KEEFNPDFRIF VPHPEDASRF SFIPFGGGLR SCVGKEFAKI
LLKIFTVELA RHCDWQLLNG PPTMKTSTPTV YPVDNLPARF TYFQG

[ANTIBODY SPECIFICITY]

The antibody is a rabbit polyclonal antibody raised against CYP26A1. It has been selected for its ability to recognize CYP26A1 in immunohistochemical staining and western blotting.

[APPLICATIONS]

Western blotting: 1:100-400

Immunocytochemistry in formalin fixed cells: 1:100-500

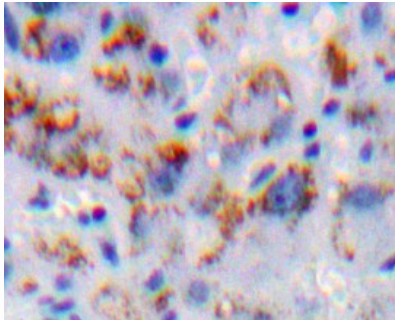
Immunohistochemistry in formalin fixed frozen section: 1:100-500

Immunohistochemistry in paraffin section: 1:50-200

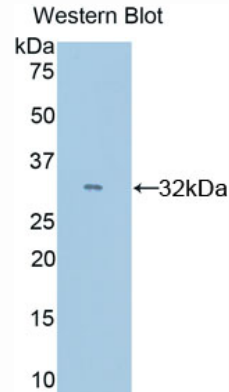
Enzyme-linked Immunosorbent Assay: 1:100-200

Optimal working dilutions must be determined by end user.

[IMAGES]



Used in DAB staining on formalin fixed
paraffin-embedded Liver tissue



Used in Western Blot, Sample:
Recombinant CYP26A1, Mouse

[CONTENTS]

Form & Buffer: Supplied as solution form in PBS, pH7.4, containing 0.02% NaN_3 , 50% glycerol.

[QUALITY CONTROL]

Content: The quality control contains recombinant CYP26A1 (Asn250~Gly495) disposed in loading buffer.

Usage: 10uL per well when 3,3'-Diaminobenzidine(DAB) as the substrate.
5uL per well when used in enhanced chemiluminescent (ECL).

Note: The quality control is specifically manufactured as the positive control. Not used for other purposes.

Loading Buffer: 100mM Tris(pH8.8), 2% SDS, 200mM NaCl, 50% glycerol, BPB 0.01%, NaN_3 0.02%.

[STORAGE]

Store at 4°C for frequent use. Stored at -20°C to -80°C in a manual defrost freezer for one year without detectable loss of activity. Avoid repeated freeze-thaw cycles.