

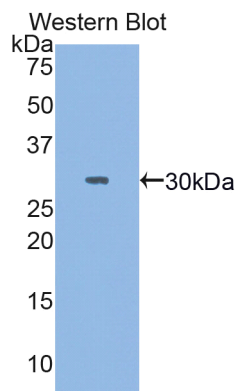
pA93415Hu01
Polyclonal Antibody
To Myosin Heavy Chain 3, Skeletal Muscle, Embryonic (MYH3)
Organism: Homo sapiens (Human)
Instruction manual

FOR IN VITRO USE AND RESEARCH USE ONLY
 NOT FOR USE IN CLINICAL DIAGNOSTIC PROCEDURES

7th Edition (Revised in May, 2013)

[**PRODUCT INFORMATION**]

Immunogen: MYH3, Human
Clonality: Polyclonal
Host: Rabbit
Immunoglobulin Type: IgG
Purification: Affinity Chromatography.
Applications: WB, ICC, IHC-P, IHC-F, ELISA
Concentration: 200µg/mL
UOM: 100µg



Sample: Recombinant MYH3, Human

[**IMMUNOGEN INFORMATION**]

Immunogen: Recombinant MYH3 (Glu1403~Arg1645) expressed in *E.coli*.
USCN Accession No.: rP93415Hu01
Sequence: The target protein is fused with N-terminal His-Tag and its sequence is listed below.

MGHHHHHHHSG SEF-EQVEAVNA KCASLEKTKQ RLQGEVEDLM VDVERANSLA
 AALDKKQRNF DKVLAEWKTK CEESQAELEA SLKESRSLST ELFKLKNAYE EALDQLETVK
 RENKNLEQEI ADLTEQIAEN GKTITHELEKS RKQIELEKAD IQLALEEEAEA ALEHEEAKIL
 RIQLELTQVK SEIDRKIAEK DEEIEQLKRN YQRTVETMQS ALDAEVRSRN EAIRLKKKME
 GDLNEIEIQL SHANRQAAET LKHLR

Unique product **Superb quality** **Client favorite** **Nicest service**  **ISO9001:2008**;  **ISO13485:2003**;  **CE**

[ANTIBODY SPECIFICITY]

The antibody is a rabbit polyclonal antibody raised against MYH3. It has been selected for its ability to recognize MYH3 in immunohistochemical staining and western blotting.

[APPLICATIONS]

Western blotting: 1:100-400

Immunocytochemistry in formalin fixed cells: 1:100-500

Immunohistochemistry in formalin fixed frozen section: 1:100-500

Immunohistochemistry in paraffin section: 1:50-200

Enzyme-linked Immunosorbent Assay: 1:100-200

Optimal working dilutions must be determined by end user.

[CONTENTS]

Form & Buffer: Supplied as solution form in PBS, pH7.4, containing 0.02% NaN_3 , 50% glycerol.

[QUALITY CONTROL]

Content: The quality control contains recombinant MYH3 (Glu1403~Arg1645) disposed in loading buffer.

Usage: 10uL per well when 3,3'-Diaminobenzidine(DAB) as the substrate.
5uL per well when used in enhanced chemiluminescent (ECL).

Note: The quality control is specifically manufactured as the positive control. Not used for other purposes.

Loading Buffer: 100mM Tris(pH8.8), 2% SDS, 200mM NaCl, 50% glycerol, BPB 0.01%, NaN_3 0.02%.

[STORAGE]

Store at 4°C for frequent use. Stored at -20°C to -80°C in a manual defrost freezer for one year without detectable loss of activity. Avoid repeated freeze-thaw cycles.

Unique product Superb quality Client favorite Nicest service  ISO9001:2008;  ISO13485:2003; 