

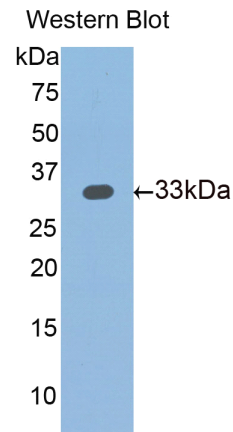
A93354Hu01
Antibody to Slit Homolog 1 (Slit1)
Instruction manual

FOR IN VITRO USE AND RESEARCH USE ONLY
NOT FOR USE IN CLINICAL DIAGNOSTIC PROCEDURES

6th Edition (Revised in March, 2013)

[PRODUCT INFORMATION]

Immunogen: Slit1
Clonality: Polyclonal
Host: Rabbit
Organism: Human
Immunoglobulin Type: IgG
Purification: Affinity Chromatography.
Applications: WB, ICC, IHC-P, IHC-F
Concentration: 200µg/mL
UOM: 100µg






Sample: Recombinant Human Slit1

[IMMUNOGEN INFORMATION]

Immunogen: Recombinant human Slit1 (Ile345~Asn623) expressed in *E.coli*.
USCN Accession No.: P93354Hu01
Sequence: The target protein is fused with N-terminal His-Tag and its sequence is listed below.

MGHHHHHHSQSEF-IAEIAP DAFQGLRSLN SLVLYGNKIT DLPRGVFGGL YTLQLLLLNA
NKINCIRPDA FQDLQNLSLL SLYDNKIQSL AKGTFTSLRA IQTLHLAQNP FICDCNLKWL
ADFLRTNPIE TSGARCASPR RLANKRIGQI KSKKFRCSAK EQYFIPGTED YQLNSECNDS
VVCPhKCRCE ANVVECSSLK LTKIPERIPQ STAE LRLNNN EISILEATGM FKKLTHLKKI
NLSNNKVSEI EDGAFEGAAS VSELHLTANQ LESIRSGMFR GLDGLRTLML RNN

Unique product Superb quality Client favorite Nicest service  ISO9001:2008;  ISO13485:2003; 

[ANTIBODY SPECIFICITY]

Anti Slit1 is a rabbit polyclonal antibody raised against human Slit1. This antibody has been selected for its ability to recognize human Slit1 in immunohistochemical staining and western blotting, non cross-reactive with other members of the family.

[APPLICATIONS]

Western blotting: 1:100-400

Immunocytochemistry in formalin fixed cells: 1:100-500

Immunohistochemistry in formalin fixed frozen section: 1:100-500

Immunohistochemistry in paraffin section: 1:50-200

Optimal working dilutions must be determined by end user.

[CONTENTS]

Form & Buffer: Supplied as solution form in PBS, pH7.4, containing 0.02% Na₃N, 50% glycerol.

[QUALITY CONTROL]

Content: The quality control contains recombinant human Slit1(Ile345~Asn623) disposed in loading buffer.

Usage: 10uL per well when 3,3'-Diaminobenzidine(DAB) as the substrate.
5uL per well when used in enhanced chemiluminescent (ECL).

Note: The quality control is specifically manufactured as the positive control. Not used for other purposes.

Loading Buffer: 100mM Tris(pH8.8), 2% SDS, 200mM NaCl, 50% glycerol, BPB 0.01%, Na₃N 0.02%.

[STORAGE]

Store at 4°C for frequent use. Stored at -20°C to -80°C in a manual defrost freezer for one year without detectable loss of activity. Avoid repeated freeze-thaw cycles.