



A93297Hu01
Polyclonal Antibody to Cytochrome P450 1B1 (CYP1B1)
Instruction manual

FOR IN VITRO USE AND RESEARCH USE ONLY
NOT FOR USE IN DIAGNOSTIC OR THERAPEUTIC PROCEDURES

4th Edition (Revised in September, 2012)

[PRODUCT INFORMATION]

Immunogen: CYP1B1

Clonality: Polyclonal

Host: Rabbit

Species Reactivity: Human

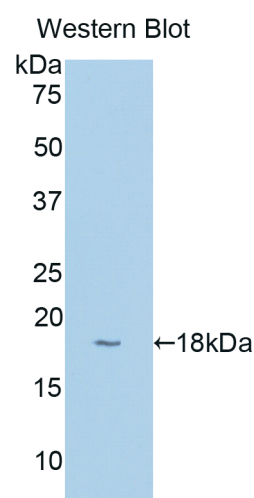
Ig type: Rabbit IgG

Purification: Antibodies are purified by target protein affinity chromatography.

Applications: WB, ICC, IHC-P, IHC-F

Form: Liquid

Size: 100µg



Sample: Recombinant human CYP1B1

[IMMUNOGEN INFORMATION]

Immunogen: Recombinant human CYP1B1 (Asp374~Phe516) expressed in *E.coli*.

Molecular Weight: 17.9 kDa

USCN accession No.: P93297Hu01

Sequence: The target protein is fused with N-terminal His-Tag and its sequence is listed below.

MGHHHHHSGSEF-DQP NLPY VLAFLYEAMR FSSFVPVTIP HATTANTSVL GYHIPKDTV FVNQWSVNHD PLKWPNPENF
DPARFLDKDG LINKDLTSRV MIFSVGKRRC IGEELSKMQL FLFISILAHQ CDFRANPNP AKMNF SYGLT IKPKSF



[ANTIBODY SPECIFICITY]

Anti CYP1B1 is a rabbit polyclonal antibody raised against human CYP1B1. This antibody has been selected for its ability to recognize human CYP1B1 in immunohistochemical staining and western blotting, non cross-reactive with other members of the family.

[APPLICATIONS]

Western blotting: 1:100-400

Immunocytochemistry in formalin fixed cells: 1:100-500

Immunohistochemistry in formalin fixed frozen section: 1:100-500

Immunohistochemistry in paraffin section: 1:50-200

Optimal working dilutions must be determined by end user.

[CONTENTS]

Form & Buffer: Supplied as solution form in PBS, pH 7.4, containing 0.02%Na₃N, 50% glycerol.

[STORAGE]

Store at 4°C for frequent use. Stored at -20°C to -80°C in a manual defrost freezer for one year without detectable loss of activity. Avoid repeated freeze-thaw cycles.

