

**PAC920Mu01**

**Polyclonal Antibody to Platelet Derived Growth Factor C (PDGFC)**

**Organism Species: *Mus musculus* (Mouse)**

***Instruction manual***

FOR IN VITRO USE AND RESEARCH USE ONLY

NOT FOR USE IN CLINICAL DIAGNOSTIC PROCEDURES

---

---

9th Edition (Revised in Jul, 2013)

## **[ PRODUCT INFORMATION ]**

**Immunogen:** PDGFC, Mouse

**Clonality:** Polyclonal

**Host:** Rabbit

**Immunoglobulin Type:** IgG

**Purification:** Affinity Chromatography.

**Applications:** WB, ICC, IHC-P, IHC-F, ELISA

**Concentration:** 200µg/mL

**UOM:** 100µg

## **[ IMMUNOGEN INFORMATION ]**

**Immunogen:** Recombinant PDGFC (Glu23~Gly345) expressed in *E.coli*.

**Accession No.:** RPC920Mu01

**Sequence:** The target protein is fused with two N-terminal Tags, His-tag and T7-tag and its sequence is listed below.

MGSSHHHHHH SSGLVPRGSH MASMTGGQQM GRGSEF- ESNLSSKL QLSSDKEQNG  
VQDPRHERVV TISGNGSIHS PKFPHTYPRN MVLVWRLVAV DENVRIQLTF DERFGLEDPE  
DDICKYDFVE VEEPSDGSVL GRWCGSGTVP GKQTSKGNHI RIRFVSDEYF PSEPGFCIHY  
SIIMPQVTET TSPSVLPPSS LSLDLLNNAV TAFSTLEELI RYLEPDRWQV DLDSLYKPTW  
QLLGKAFLYG KSKVNLNL LKEEVKLYSC TPRNFSVSIR EELKRTDTIF WPGCLLVKRC  
GGNCACCLHN CNECQCVP RK VTKKYHEVLQ LRPKTGVKGL HKSLTDVALE  
HHEECDVCR GNAGG

## **[ ANTIBODY SPECIFICITY ]**

The antibody is a rabbit polyclonal antibody raised against PDGFC. It has been selected for its ability to recognize PDGFC in immunohistochemical staining and western blotting.

## **[ APPLICATIONS ]**

Western blotting: 1:100-400

Immunocytochemistry in formalin fixed cells: 1:100-500

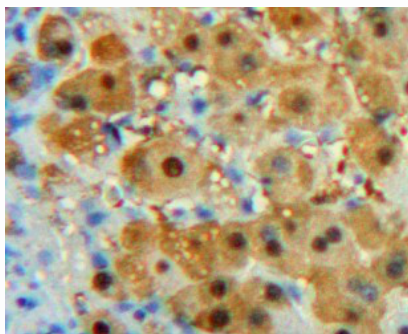
Immunohistochemistry in formalin fixed frozen section: 1:100-500

Immunohistochemistry in paraffin section: 1:50-200

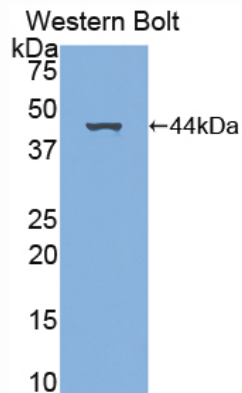
Enzyme-linked Immunosorbent Assay: 1:100-200

Optimal working dilutions must be determined by end user.

## [ **IMAGES** ]



Used in DAB staining on formalin fixed  
paraffin-embedded Liver tissue



Used in Western Blot, Sample:  
Recombinant PDGFC, Mouse

## [ **CONTENTS** ]

**Form & Buffer:** Supplied as solution form in PBS, pH7.4, containing 0.02%  $\text{NaN}_3$ , 50% glycerol.

## [ **QUALITY CONTROL** ]

**Content:** The quality control contains recombinant PDGFC (Glu23~Gly345) disposed in loading buffer.

**Usage:** 10uL per well when 3,3'-Diaminobenzidine(DAB) as the substrate.  
5uL per well when used in enhanced chemiluminescent (ECL).

**Note:** The quality control is specifically manufactured as the positive control. Not used for other purposes.

**Loading Buffer:** 100mM Tris(pH8.8), 2% SDS, 200mM NaCl, 50% glycerol, BPB 0.01%,  $\text{NaN}_3$  0.02%.

## [ **STORAGE** ]

Store at 4°C for frequent use. Stored at -20°C to -80°C in a manual defrost freezer for one year without detectable loss of activity. Avoid repeated freeze-thaw cycles.