

**PAC625Hu01**

**Polyclonal Antibody to Mercaptopyruvate Sulfurtransferase (MPST)**

**Organism: Homo sapiens (Human)**

***Instruction manual***

FOR IN VITRO USE AND RESEARCH USE ONLY  
NOT FOR USE IN CLINICAL DIAGNOSTIC PROCEDURES

8th Edition (Revised in Jun, 2013)

## **[ PRODUCT INFORMATION ]**

**Immunogen:** MPST, Human

**Clonality:** Polyclonal

**Host:** Rabbit

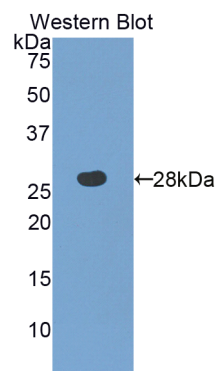
**Immunoglobulin Type:** IgG

**Purification:** Affinity Chromatography.

**Applications:** WB, ICC, IHC-P, IHC-F, ELISA

**Concentration:** 200µg/mL

**UOM:** 100µg



*Sample: Recombinant MPST, Human*

## **[ IMMUNOGEN INFORMATION ]**

**Immunogen:** Recombinant MPST (Arg68~Glu278) expressed in *E. coli*.

**USCN Accession No.:** RPC625Hu01

**Sequence:** The target protein is fused with two N-terminal Tags, His-tag and T7-tag and its sequence is listed below.

MGSSHHHHHH SSSLVPRGSH MASMTGGQQM GRGSEF-RTS PYDHMLPGAE  
HFAEYAGRLG VGAATHVVIY DASDQGLYSA PRVWWMFRAF GHHAVSLLDG  
GLRHWLRQNL PLSSGKSQPA PAEFRAQLDP AFIKTYEDIK ENLESRRFQV VDSRATGRFR  
GTEPEPRDGI EPGHIPGTVN IPFTDFLSQE GLEKSPEEIR HLFQEKKVDL SKPLVATCGS  
GVTACHVALG AYLCGKPDVP IYDGSWVE

## [ **ANTIBODY SPECIFICITY** ]

The antibody is a rabbit polyclonal antibody raised against MPST. It has been selected for its ability to recognize MPST in immunohistochemical staining and western blotting.

## [ **APPLICATIONS** ]

Western blotting: 1:100-400

Immunocytochemistry in formalin fixed cells: 1:100-500

Immunohistochemistry in formalin fixed frozen section: 1:100-500

Immunohistochemistry in paraffin section: 1:50-200

Enzyme-linked Immunosorbent Assay: 1:100-200

Optimal working dilutions must be determined by end user.

## [ **CONTENTS** ]

**Form & Buffer:** Supplied as solution form in PBS, pH7.4, containing 0.02%  $\text{NaN}_3$ , 50% glycerol.

## [ **QUALITY CONTROL** ]

**Content:** The quality control contains recombinant MPST (Arg68~Glu278) disposed in loading buffer.

**Usage:** 10uL per well when 3,3'-Diaminobenzidine(DAB) as the substrate.

5uL per well when used in enhanced chemiluminescent (ECL).

**Note:** The quality control is specifically manufactured as the positive control. Not used for other purposes.

**Loading Buffer:** 100mM Tris(pH8.8), 2% SDS, 200mM NaCl, 50% glycerol, BPB 0.01%,  $\text{NaN}_3$  0.02%.

## [ **STORAGE** ]

Store at 4°C for frequent use. Stored at -20°C to -80°C in a manual defrost freezer for one year without detectable loss of activity. Avoid repeated freeze-thaw cycles.