

PAC477Ga01

Polyclonal Antibody to Fibrinogen Gamma (FGg)

Organism Species: Chicken (Gallus)

Instruction manual

FOR IN VITRO USE AND RESEARCH USE ONLY
NOT FOR USE IN CLINICAL DIAGNOSTIC PROCEDURES

9th Edition (Revised in Jul, 2013)

[PRODUCT INFORMATION]

Immunogen: FGg, Gallus

Clonality: Polyclonal

Host: Rabbit

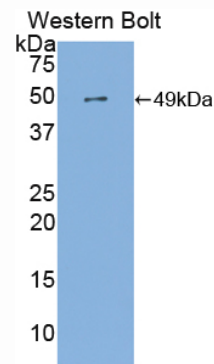
Immunoglobulin Type: IgG

Purification: Affinity Chromatography.

Applications: WB, ICC, IHC-P, IHC-F, ELISA

Concentration: 200µg/mL

UOM: 100µg



Sample: Recombinant FGg, Gallus

[IMMUNOGEN INFORMATION]

Immunogen: Recombinant FGg (Tyr27~Ser435) expressed in *E.coli*.

USCN Accession No.: RPC477Ga01

Sequence: The target protein is fused with N-terminal His-Tag and its sequence is listed below.

MGHHHHHSGSEF-YIAT RENCCILDER FGSYCPTTCG IADFFNKYRL TTDGELLEIE
GLLQQATNST GSIEYLIQHI KTIYPSEKQT LPQSIEQLTQ KSKKIIIEII RYENTILAHE
NTIQQLTDMH IMNSNKITQL KQKIAQLESH CQEPCKDTAE IQETTGRDCQ DIANKGARKS
GLYFIKPQKA KQSFLVYCEI DTYGNGWTVL QRRLDGSEDF RRNWVQYKEG FGHLSPDDTT
EFWLGNEKIH LITTQSTLPY ALRIELEDWS GKKGTADYAV FKVGTEDKY RLTYAYFIGG
ERGDADFDFN FGDDPSDKSY TYHNGMRFST FDNDNDNFEG NCAEQDGSWG
WMNRCHAGHL NGPYYIGGVY SRDTGTNSYD NGIIWATWRD RWYSMKKTTM KIIPFNRLSI
DGQQHSGGLK QVGDS

[ANTIBODY SPECIFICITY]

The antibody is a rabbit polyclonal antibody raised against FGg. It has been selected for its ability to recognize FGg in immunohistochemical staining and western blotting.

[APPLICATIONS]

Western blotting: 1:100-400

Immunocytochemistry in formalin fixed cells: 1:100-500

Immunohistochemistry in formalin fixed frozen section: 1:100-500

Immunohistochemistry in paraffin section: 1:50-200

Enzyme-linked Immunosorbent Assay: 1:100-200

Optimal working dilutions must be determined by end user.

[CONTENTS]

Form & Buffer: Supplied as solution form in PBS, pH7.4, containing 0.02% NaN_3 , 50% glycerol.

[QUALITY CONTROL]

Content: The quality control contains recombinant FGg (Tyr27~Ser435) disposed in loading buffer.

Usage: 10uL per well when 3,3'-Diaminobenzidine(DAB) as the substrate.
5uL per well when used in enhanced chemiluminescent (ECL).

Note: The quality control is specifically manufactured as the positive control. Not used for other purposes.

Loading Buffer: 100mM Tris(pH8.8), 2% SDS, 200mM NaCl, 50% glycerol, BPB 0.01%, NaN_3 0.02%.

[STORAGE]

Store at 4°C for frequent use. Stored at -20°C to -80°C in a manual defrost freezer for one year without detectable loss of activity. Avoid repeated freeze-thaw cycles.