

**PAC241Hu01**

**Polyclonal Antibody to Telomerase Reverse Transcriptase (TERT)**

**Organism Species: Homo sapiens (Human)**

***Instruction manual***

FOR IN VITRO USE AND RESEARCH USE ONLY

NOT FOR USE IN CLINICAL DIAGNOSTIC PROCEDURES

9th Edition (Revised in Jul, 2013)

## **[ PRODUCT INFORMATION ]**

**Immunogen:** TERT, Human

**Clonality:** Polyclonal

**Host:** Rabbit

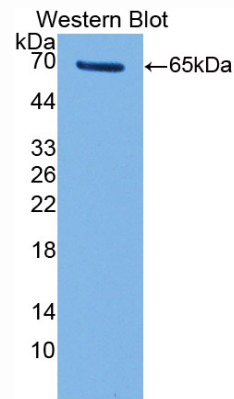
**Immunoglobulin Type:** IgG

**Purification:** Affinity Chromatography.

**Applications:** WB, ICC, IHC-P, IHC-F, ELISA

**Concentration:** 200µg/mL

**UOM:** 100µg



*Sample: Recombinant TERT, Human*

## **[ IMMUNOGEN INFORMATION ]**

**Immunogen:** Recombinant TERT (Arg787~Arg1084) expressed in *E.coli*.

**Accession No.:** RPC241Hu01

**Sequence:** The target protein is fused with two N-terminal Tags, His-tag and GST-tag and its sequence is listed below.

MSPILGYWKI KGLVQPTRL L LEYLEEKYEE HLYERDEGDK WRNKKFELGL EFPNLPYYID  
GDVKLTQSMA IIRYIADKHN MLGGCPKERA EISMLEGAVL DIRYGVSR IA YSKDFETLKV  
DFLSKLP EML KMFEDRLCHK TYLNGDHVTH PDFMLYDALD VVLYMDPMCL DAFPKLVCFK  
KRIEAIQID KYLKSSKYIA WPLQG WQATF GGGDHPKSD GSTSGSGHHH HHSAGLVPR  
GSTAIGMKET AAKFERQHM DSPDLGTGGG SGIEGRGSMG YRGSEF-RDAV  
VIEQSSSLNE ASSGLFDVFL RFMCHHAVRI RGKSYVQCQG IPQGSILSTL LCLSLCYGDME  
NKLFAGIRRD GLLLRLVDDF LLVTPHLTHA KTFLRTLVRG VPEYGCVVNL RKTVVNFPVE

DEALGGTAFV QMPAHGLFPW CGLLLDTRTL EVQSDYSSYA RTSIRASLTF NRGFKAGRNM  
RRKLFGLVRL KCHSLFLDLQ VNSLQTVCTN IYKILLQAY RFHACVLQLP FHQQVWKNPT  
FFLRVISDTA SLCYSILKAK NAGMSLGAKG AAGPLPSEAV QWLCHQAFLL KLTR

## **[ ANTIBODY SPECIFICITY ]**

The antibody is a rabbit polyclonal antibody raised against TERT. It has been selected for its ability to recognize TERT in immunohistochemical staining and western blotting.

## **[ APPLICATIONS ]**

Western blotting: 1:50-400

Immunocytochemistry in formalin fixed cells: 1:50-500

Immunohistochemistry in formalin fixed frozen section: 1:50-500

Immunohistochemistry in paraffin section: 1:10-100

Enzyme-linked Immunosorbent Assay: 1:100-200

Optimal working dilutions must be determined by end user.

## **[ CONTENTS ]**

**Form & Buffer:** Supplied as solution form in PBS, pH7.4, containing 0.02% NaN<sub>3</sub>, 50% glycerol.

## **[ QUALITY CONTROL ]**

**Content:** The quality control contains recombinant TERT (Arg787~Arg1084) disposed in loading buffer.

**Usage:** 10uL per well when 3,3'-Diaminobenzidine(DAB) as the substrate.  
5uL per well when used in enhanced chemiluminescent (ECL).

**Note:** The quality control is specifically manufactured as the positive control. Not used for other purposes.

**Loading Buffer:** 100mM Tris(pH8.8), 2% SDS, 200mM NaCl, 50% glycerol, BPB 0.01%, NaN<sub>3</sub> 0.02%.

## **[ STORAGE ]**

Store at 4°C for frequent use. Stored at -20°C to -80°C in a manual defrost freezer for one year without detectable loss of activity. Avoid repeated freeze-thaw cycles.