

PAC084Mu02

Polyclonal Antibody to Laminin Gamma 3 (LAMC3)

Organism Species: Mus musculus (Mouse)

Instruction manual

FOR IN VITRO USE AND RESEARCH USE ONLY
NOT FOR USE IN CLINICAL DIAGNOSTIC PROCEDURES

[**PRODUCT INFORMATION**]

Immunogen: LAMC3, Mouse

Clonality: Polyclonal

Host: Rabbit

Immunoglobulin Type: IgG

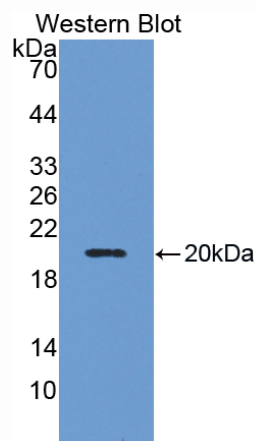
Purification: Affinity Chromatography.

Applications: WB, ICC, IHC-P, IHC-F, ELISA

Concentration: 200µg/mL

UOM: 50µg

9th Edition (Revised in Jul, 2013)



Sample: Recombinant LAMC3, Mouse

[**IMMUNOGEN INFORMATION**]

Immunogen: Recombinant LAMC3 (Lys1250~Lys1418) expressed in *E.coli*.

Accession No.: RPC084Mu02

Sequence: The target protein is fused with N-terminal His-Tag and its sequence is listed below.

MGHHHHHSGSEF- K QVIGDAAPHL GLLVTPEAMN FQARGLSWKV KALEQKLEQK
EPEVGQSVGA LQVEAGRALE KMEPFMQLRN KTAAAFTRAS SAVQAAKVTV IGAETLLADL
EGMKLRSLPL KEQAALKKKA GSIRTRLLED TKRKTQAER MLGNAASLSS STKKSKEAE
LMSKDNAK

[ANTIBODY SPECIFICITY]

The antibody is a rabbit polyclonal antibody raised against LAMC3. It has been selected for its ability to recognize LAMC3 in immunohistochemical staining and western blotting.

[APPLICATIONS]

Western blotting: 1:50-400

Immunocytochemistry in formalin fixed cells: 1:50-500

Immunohistochemistry in formalin fixed frozen section: 1:50-500

Immunohistochemistry in paraffin section: 1:10-100

Enzyme-linked Immunosorbent Assay: 1:100-200

Optimal working dilutions must be determined by end user.

[CONTENTS]

Form & Buffer: Supplied as solution form in PBS, pH7.4, containing 0.02% NaN₃, 50% glycerol.

[STORAGE]

Store at 4°C for frequent use. Stored at -20°C to -80°C in a manual defrost freezer for one year without detectable loss of activity. Avoid repeated freeze-thaw cycles.