

PAC015Ra01**Polyclonal Antibody to S100 Calcium Binding Protein A3 (S100A3)****Organism Species: Rattus norvegicus (Rat)****Instruction manual**

FOR IN VITRO USE AND RESEARCH USE ONLY

NOT FOR USE IN CLINICAL DIAGNOSTIC PROCEDURES

9th Edition (Revised in Jul, 2013)

[PRODUCT INFORMATION]**Immunogen:** S100A3, Rat**Clonality:** Polyclonal**Host:** Rabbit**Immunoglobulin Type:** IgG**Purification:** Affinity Chromatography.**Applications:** WB, ICC, IHC-P, IHC-F, ELISA**Concentration:** 200µg/mL**UOM:** 100µg**[IMMUNOGEN INFORMATION]****Immunogen:** Recombinant S100A3 (Met1~Gln101) expressed in *E.coli*.**Accession No.:** RPC015Ra01**Sequence:** The target protein is fused with two N-terminal Tags, His-tag and S-tag and its sequence is listed below.

M H H H H H S S G L V P R G S G M K E T A A A K F E R Q H M D S P D L G T D D
D D K A M A D I G S - M T R P L E Q A V A A I V C T F Q E Y A G R C G D K Y K I C Q S E L K E L L Q K E L P T W T P S E F
R E C D Y N K F M S V L D T N K D C E V D F G E Y V R S L A S L C L Y C H E Y F K E C P P E P P C P Q

[ANTIBODY SPECIFICITY]

The antibody is a rabbit polyclonal antibody raised against S100A3. It has been selected for its ability to recognize S100A3 in immunohistochemical staining and western blotting.

[APPLICATIONS]

Western blotting: 1:100-400

Immunocytochemistry in formalin fixed cells: 1:100-500

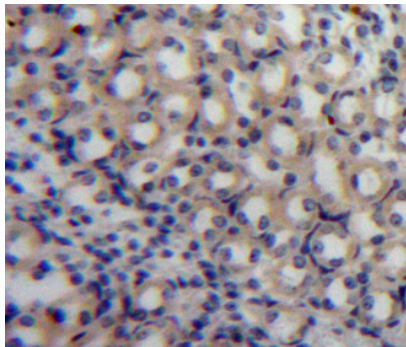
Immunohistochemistry in formalin fixed frozen section: 1:100-500

Immunohistochemistry in paraffin section: 1:50-200

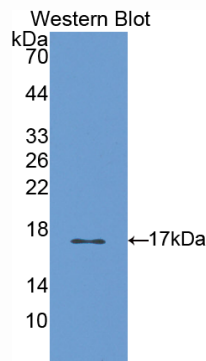
Enzyme-linked Immunosorbent Assay: 1:100-200

Optimal working dilutions must be determined by end user.

[IMAGES]



Used in DAB staining on formalin fixed
paraffin- embedded kidney tissue



Used in Western Blot ,Sample:
Recombinant S100A3,Rat

[CONTENTS]

Form & Buffer: Supplied as solution form in PBS, pH7.4, containing 0.02% NaN₃, 50% glycerol.

[QUALITY CONTROL]

Content: The quality control contains recombinant S100A3 (Met1~Gln101) disposed in loading buffer.

Usage: 10uL per well when 3,3'-Diaminobenzidine(DAB) as the substrate.
5uL per well when used in enhanced chemiluminescent (ECL).

Note: The quality control is specifically manufactured as the positive control. Not used for other purposes.

Loading Buffer: 100mM Tris(pH8.8), 2% SDS, 200mM NaCl, 50% glycerol, BPB 0.01%, NaN₃ 0.02%.

[STORAGE]

Store at 4°C for frequent use. Stored at -20°C to -80°C in a manual defrost freezer for one year without detectable loss of activity. Avoid repeated freeze-thaw cycles.