

**PAB986Ra01**

**Polyclonal Antibody to Hemopexin (HPX)**

**Organism Species: Rattus norvegicus (Rat)**

***Instruction manual***

FOR IN VITRO USE AND RESEARCH USE ONLY

NOT FOR USE IN CLINICAL DIAGNOSTIC PROCEDURES

9th Edition (Revised in Jul, 2013)

## **[ PRODUCT INFORMATION ]**

**Immunogen:** HPX, Rat

**Clonality:** Polyclonal

**Host:** Rabbit

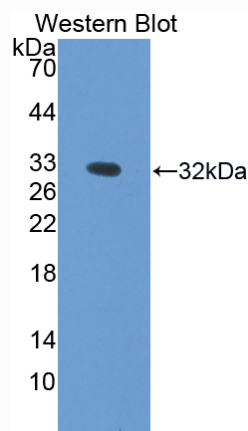
**Immunoglobulin Type:** IgG

**Purification:** Affinity Chromatography.

**Applications:** WB, ICC, IHC-P, IHC-F, ELISA

**Concentration:** 200µg/mL

**UOM:** 100µg



*Sample: Recombinant HPX, Rat*

## **[ IMMUNOGEN INFORMATION ]**

**Immunogen:** Recombinant HPX (Glu31~Thr242) expressed in *E.coli*.

**Accession No.:** RPB986Ra01

**Sequence:** The target protein is fused with N-terminal His-Tag and its sequence is listed below.

MGHHHHHSGSEF- ETVAKGENGT KPDSDVIEHC SDAWSFDATT MDHNGTMLFF  
KGEFVWRGHS GIRELISERW KNPVTSVDAA FRGPDSVFLI KEDKVWVYPP EKKENGYPKL  
FQEEFPGIPY PPDAAVECHR GECQSEGVLF FQGNRKWFWD FATRTQKERS  
WPAVGNCTAA LRWLERYYCF QGNKFLRFNP VTGEVPPRYP LDARDYFISC PGRGHGKLRN  
GT

## **[ ANTIBODY SPECIFICITY ]**

The antibody is a rabbit polyclonal antibody raised against HPX. It has been selected for its ability to recognize HPX in immunohistochemical staining and western blotting.

## **[ APPLICATIONS ]**

Western blotting: 1:50-400

Immunocytochemistry in formalin fixed cells: 1:50-500

Immunohistochemistry in formalin fixed frozen section: 1:50-500

Immunohistochemistry in paraffin section: 1:10-100

Enzyme-linked Immunosorbent Assay: 1:100-200

Optimal working dilutions must be determined by end user.

## **[ CONTENTS ]**

**Form & Buffer:** Supplied as solution form in PBS, pH7.4, containing 0.02% NaN<sub>3</sub>, 50% glycerol.

## **[ STORAGE ]**

Store at 4°C for frequent use. Stored at -20°C to -80°C in a manual defrost freezer for one year without detectable loss of activity. Avoid repeated freeze-thaw cycles.