

**pA91972Mu01**

**Polyclonal Antibody to Pigment Epithelium Derived Factor (PEDF)**  
**Organism: Mus musculus (Mouse)**  
***Instruction manual***

FOR IN VITRO USE AND RESEARCH USE ONLY  
NOT FOR USE IN CLINICAL DIAGNOSTIC PROCEDURES

7th Edition (Revised in May, 2013)

## **[ PRODUCT INFORMATION ]**

**Immunogen:** PEDF, Mouse

**Clonality:** Polyclonal

**Host:** Rabbit

**Immunoglobulin Type:** IgG

**Purification:** Affinity Chromatography.

**Applications:** WB, ICC, IHC-P, IHC-F, ELISA

**Concentration:** 200µg/mL

**UOM:** 100µg

## **[ IMMUNOGEN INFORMATION ]**

**Immunogen:** Recombinant PEDF (Ser19~Leu389) expressed in *E. coli*.

**USCN Accession No.:** rP91972Mu01



**Sequence:** The target protein is fused with two N-terminal Tags, His-tag and S-tag and its sequence is listed below.

MHHHHHSSG LVPRGSGMKE TAAAKFERQH MDSPDLGTDD DDKAMADIGS EF- SQ  
NVPSSSEGSP VPDSTGEPVE EEDPFFKVPV NKLAAAVSNF GYDLYRLRSS ASPTGNVLLS  
PLSVATALSA LSLGAEHRTE SVIHRALYYD LITNPDIHST YKELLASVTA PEKNLKSASR  
IVFERKLRVK SSFVAPLEKS YGTRPRILTG NPRVDLQEIN NWWQAQMKGK IARSTREMP  
ALSILLGVA YFKGQWVTKF DSRKTTLQDF HLEDRTVRVPMMSDPKAIL RYGLDSDLNC  
KIAQLPLTGS MSIIFFLPLT VTQNLTMIEE SLTSEFIHDI DRELKTIQAV LTPVKLKLFS  
EGELTKSLQD MKLQSLFESP DFSKITGKPV KLTQVEHRAA FEWNEEGAGS SPSPGLQPVR  
LTFPLDYHL

## **[ ANTIBODY SPECIFICITY ]**

The antibody is a rabbit polyclonal antibody raised against PEDF. It has been selected for its ability to recognize PEDF in immunohistochemical staining and western blotting.

## **[ APPLICATIONS ]**

*Unique product Superb quality Client favorite Nicest service*  ISO9001:2008;  ISO13485:2003; 

Western blotting: 1:100-400

Immunocytochemistry in formalin fixed cells: 1:100-500

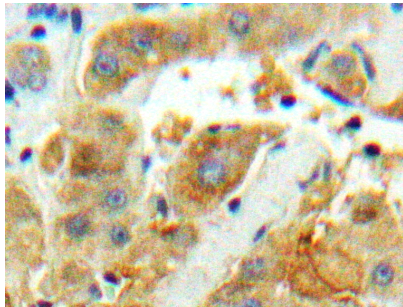
Immunohistochemistry in formalin fixed frozen section: 1:100-500

Immunohistochemistry in paraffin section: 1:50-200

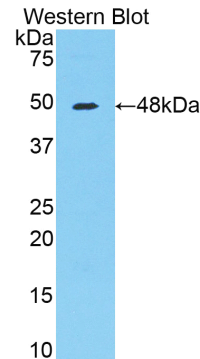
Enzyme-linked Immunosorbent Assay: 1:100-200

Optimal working dilutions must be determined by end user.

## [ IMAGES ]



Used in DAB staining on formalin fixed  
paraffin- embedded Liver tissue



Used in Western Blot ,Sample:  
Recombinant PEDF,Mouse

## [ CONTENTS ]

**Form & Buffer:** Supplied as solution form in PBS, pH7.4, containing 0.02% NaN<sub>3</sub>, 50% glycerol.

## [ QUALITY CONTROL ]

**Content:** The quality control contains recombinant PEDF (Ser19~Leu389) disposed in loading buffer.

**Usage:** 10uL per well when 3,3'-Diaminobenzidine(DAB) as the substrate.  
5uL per well when used in enhanced chemiluminescent (ECL).

**Note:** The quality control is specifically manufactured as the positive control. Not used for other purposes.

**Loading Buffer:** 100mM Tris(pH8.8), 2% SDS, 200mM NaCl, 50% glycerol, BPB 0.01%, NaN<sub>3</sub> 0.02%.

## [ STORAGE ]

Store at 4°C for frequent use. Stored at -20°C to -80°C in a manual defrost freezer for one year without detectable loss of activity. Avoid repeated freeze-thaw cycles.

*Unique product Superb quality Client favorite Nicest service*  ISO9001:2008 ;  ISO13485:2003 ;  CE