

**PAB966Ra01**

**Polyclonal Antibody to Syndecan 1 (SDC1)**

**Organism Species: Rattus norvegicus (Rat)**

*Instruction manual*

FOR IN VITRO USE AND RESEARCH USE ONLY

NOT FOR USE IN CLINICAL DIAGNOSTIC PROCEDURES

---

---

## **[ PRODUCT INFORMATION ]**

**Immunogen:** SDC1, Rat

**Clonality:** Polyclonal

**Host:** Rabbit

**Immunoglobulin Type:** IgG

**Purification:** Affinity Chromatography.

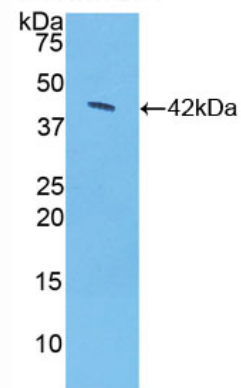
**Applications:** WB, ICC, IHC-P, IHC-F, ELISA

**Concentration:** 200µg/mL

**UOM:** 100µg

9th Edition (Revised in Jul, 2013)

Western Blot



Sample: Recombinant SDC1, Rat

## **[ IMMUNOGEN INFORMATION ]**

**Immunogen:** Recombinant SDC1 (Ser58~Ala313) expressed in *E.coli*.

**Accession No.:** RPB966Ra01

**Sequence:** The target protein is fused with two N-terminal Tags, His-tag and GST-tag and its sequence is listed below.

MSPILGYWKI KGLVQPTRL L LEYLEEKYEE HLYERDEGDK WRNKKFELGL EFPNLPYYID  
GDVKLTQSMA IIRYIADKHN MLGGCPKERA EISMLEGAVL DIRYGVSRIA YSKDFETLKV  
DFLSKLP EML KMFEDRLCHK TYLNGDHVTH PDFMLYDALD VVLYMDPMCL DAFPKLVCFK  
KRIEAIQID KYLKSSKYIA WPLQG WQATF GGGDHPKSD GSTSGSGHHH HHSAGLVPR  
GSTAIGMKET AAKFERQHM DSPDLGTLEV LFQGPLGSEF- SRQ TPSTWKDVWL  
LTATPTAPEP TSRDTEATLT SILPAGEKPE EGEPVAHVEA EPDFTARDKE KEATTRPRET  
TQLPVTQQAS TAARATTAQA SVTSHPHGDV QPGLHETLAP TAPGQPDHQP PSVEDGGTSS

IKEVVEDETT NQLPAGEGSG EQDFTFETSG ENTAVAGVEP DLRNQSPVDE GATGASQGLL  
DRKEVLGGVI AGGLVGLIFA VCLVAFMLYR MKKKDEGSYS LEEPQKANGG AYQKPTKQEE  
FYA

## **[ ANTIBODY SPECIFICITY ]**

The antibody is a rabbit polyclonal antibody raised against SDC1. It has been selected for its ability to recognize SDC1 in immunohistochemical staining and western blotting.

## **[ APPLICATIONS ]**

Western blotting: 1:100-400

Immunocytochemistry in formalin fixed cells: 1:100-500

Immunohistochemistry in formalin fixed frozen section: 1:100-500

Immunohistochemistry in paraffin section: 1:50-200

Enzyme-linked Immunosorbent Assay: 1:100-200

Optimal working dilutions must be determined by end user.

## **[ CONTENTS ]**

**Form & Buffer:** Supplied as solution form in PBS, pH7.4, containing 0.02% NaN<sub>3</sub>, 50% glycerol.

## **[ QUALITY CONTROL ]**

**Content:** The quality control contains recombinant SDC1 (Ser58~Ala313) disposed in loading buffer.

**Usage:** 10uL per well when 3,3'-Diaminobenzidine(DAB) as the substrate.  
5uL per well when used in enhanced chemiluminescent (ECL).

**Note:** The quality control is specifically manufactured as the positive control. Not used for other purposes.

**Loading Buffer:** 100mM Tris(pH8.8), 2% SDS, 200mM NaCl, 50% glycerol, BPB 0.01%, NaN<sub>3</sub> 0.02%.

## **[ STORAGE ]**

Store at 4°C for frequent use. Stored at -20°C to -80°C in a manual defrost freezer for one year without detectable loss of activity. Avoid repeated freeze-thaw cycles.