



A91888Hu01

Polyclonal Antibody to Cyclin Dependent Kinase 1 (CDK1)

Instruction manual

FOR IN VITRO USE AND RESEARCH USE ONLY
NOT FOR USE IN DIAGNOSTIC OR THERAPEUTIC PROCEDURES

4th Edition (Revised in September, 2012)

[**PRODUCT INFORMATION**]

Immunogen: CDK1

Clonality: Polyclonal

Host: Rabbit

Species Reactivity: Human

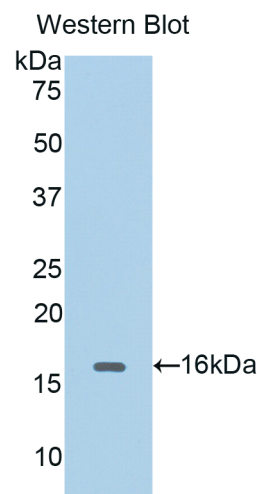
Ig type: Rabbit IgG

Purification: Antibodies are purified by target protein affinity chromatography.

Applications: WB, ICC, IHC-P, IHC-F

Form: Liquid

Size: 100µg



Sample: Recombinant human CDK1

[**IMMUNOGEN INFORMATION**]

Immunogen: Recombinant human CDK1 (Arg59~Ser182) expressed in *E.coli*.

Molecular Weight: 15.9 kDa

USCN accession No.: P91888Hu01

Sequence: The target protein is fused with N-terminal His-Tag and its sequence is listed below.

MGHHHHHSGSEF-RH PNIVSLQDVL MQDSRLYLIF EFLSMDLKKY LDSIPPGQYM DSSLVKSYLY QILQGIVFCH
SRRVLHRDLK PQNLLIDDKG TIKLADFLA RAFGIPIRVY THEVTLWYR SPEVLLGSAR YS



[ANTIBODY SPECIFICITY]

Anti CDK1 is a rabbit polyclonal antibody raised against human CDK1. This antibody has been selected for its ability to recognize human CDK1 in immunohistochemical staining and western blotting, non cross-reactive with other members of the family.

[APPLICATIONS]

Western blotting: 1:100-400

Immunocytochemistry in formalin fixed cells: 1:100-500

Immunohistochemistry in formalin fixed frozen section: 1:100-500

Immunohistochemistry in paraffin section: 1:50-200

Optimal working dilutions must be determined by end user.

[CONTENTS]

Form & Buffer: Supplied as solution form in PBS, pH 7.4, containing 0.02%Na₃N, 50% glycerol.

[STORAGE]

Store at 4°C for frequent use. Stored at -20°C to -80°C in a manual defrost freezer for one year without detectable loss of activity. Avoid repeated freeze-thaw cycles.

