

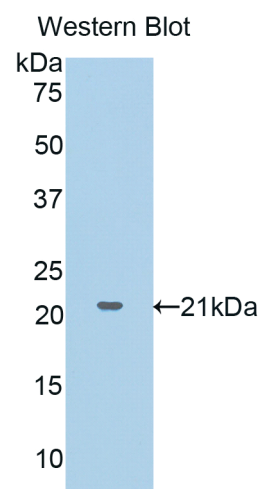
A91831Mu01
Polyclonal Antibody to Hedgehog Homolog, Sonic (SHH)
Instruction manual

FOR IN VITRO USE AND RESEARCH USE ONLY
NOT FOR USE IN DIAGNOSTIC OR THERAPEUTIC PROCEDURES

4th Edition (Revised in September, 2012)

[PRODUCT INFORMATION]

Immunogen: SHH
Clonality: Polyclonal
Host: Rabbit
Species Reactivity: Mouse
Ig type: Rabbit IgG
Purification: Antibodies are purified by target protein affinity chromatography.
Applications: WB, ICC, IHC-P, IHC-F
Form: Liquid
Size: 100µg



Sample: Recombinant mouse SHH

[IMMUNOGEN INFORMATION]

Immunogen: Recombinant mouse SHH (Gly28~Ala193) expressed in *E.coli*.

Molecular Weight: 20.4 kDa

USCN accession No.: P91831Mu01

Sequence: The target protein is fused with N-terminal His-Tag and its sequence is listed below.

MGHHHHHSGSEF-GRG FGKRRHPKKL TPLAYKQFIP NVAEKLGLAS GRYEGKITRN SERFKELTPN YNPDIIFKDE
ENTGADRLMT QRCKDKLNAL AISVMNQWPG VKLRVTEGWD EDGHHSEESL HYEGRAVDIT TSDRDRSKYG MLARLAVEAG
FDWVYYESKA HIHCSVKAEN SVA



Export Processing Zone, Economic & Technological
Development Zone, Wuhan 430056, P.R. China
Tel: 0086-27-8425-9552 Toll-free: 0086-800-8800-687
Fax: 0086-27-8425-9551 Email: uscnk@uscnk.com

[ANTIBODY SPECIFICITY]

Anti SHH is a rabbit polyclonal antibody raised against mouse SHH. This antibody has been selected for its ability to recognize mouse SHH in immunohistochemical staining and western blotting, non cross-reactive with other members of the family.

[APPLICATIONS]

Western blotting: 1:100-400

Immunocytochemistry in formalin fixed cells: 1:100-500

Immunohistochemistry in formalin fixed frozen section: 1:100-500

Immunohistochemistry in paraffin section: 1:50-200

Optimal working dilutions must be determined by end user.

[CONTENTS]

Form & Buffer: Supplied as solution form in PBS, pH 7.4, containing 0.02%Na₃N, 50% glycerol.

[STORAGE]

Store at 4°C for frequent use. Stored at -20°C to -80°C in a manual defrost freezer for one year without detectable loss of activity. Avoid repeated freeze-thaw cycles.

