

PAB815Ra04

Polyclonal Antibody to Interleukin 6 Receptor (IL6R)

Organism Species: Rattus norvegicus (Rat)

Instruction manual

FOR IN VITRO USE AND RESEARCH USE ONLY
NOT FOR USE IN CLINICAL DIAGNOSTIC PROCEDURES

9th Edition (Revised in Jul, 2013)

[PRODUCT INFORMATION]

Immunogen: IL6R, Rat

Clonality: Polyclonal

Host: Rabbit

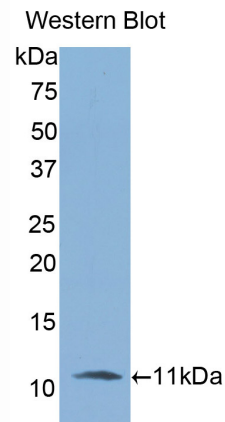
Immunoglobulin Type: IgG

Purification: Affinity Chromatography.

Applications: WB, ICC, IHC-P, IHC-F, ELISA

Concentration: 200µg/mL

UOM: 100µg



Sample: Recombinant IL6R, Rat

[IMMUNOGEN INFORMATION]

Immunogen: Recombinant IL6R (Ala19~Val108) expressed in *E.coli*.

Accession No.: RPB815Ra04

Sequence: The target protein is fused with N-terminal His-Tag and its sequence is listed below.

MGHHHHHHSQSEF- AL VLGSCRALEV ANGTVTSPLG ATVTLICPGK EAAGNATIHW
VYSGSQSREW TTTGNTLVLR AVQVNDTGHY LCFLDDHLVG TVPLLVDV

[ANTIBODY SPECIFICITY]

The antibody is a rabbit polyclonal antibody raised against IL6R. It has been selected for its ability to recognize IL6R in immunohistochemical staining and western blotting.

[APPLICATIONS]

Western blotting: 1:50-400

Immunocytochemistry in formalin fixed cells: 1:50-500

Immunohistochemistry in formalin fixed frozen section: 1:50-500

Immunohistochemistry in paraffin section: 1:10-100

Enzyme-linked Immunosorbent Assay: 1:100-200

Optimal working dilutions must be determined by end user.

[CONTENTS]

Form & Buffer: Supplied as solution form in PBS, pH7.4, containing 0.02% NaN₃, 50% glycerol.

[STORAGE]

Store at 4°C for frequent use. Stored at -20°C to -80°C in a manual defrost freezer for one year without detectable loss of activity. Avoid repeated freeze-thaw cycles.