

PAB789Hu01

Polyclonal Antibody to Sialic Acid Binding Ig Like Lectin 7 (SIGLEC7)

Organism Species: Homo sapiens (Human)

Instruction manual

FOR IN VITRO USE AND RESEARCH USE ONLY

NOT FOR USE IN CLINICAL DIAGNOSTIC PROCEDURES

9th Edition (Revised in Jul, 2013)

[PRODUCT INFORMATION]

Immunogen: SIGLEC7, Human

Clonality: Polyclonal

Host: Rabbit

Immunoglobulin Type: IgG

Purification: Affinity Chromatography.

Applications: WB, ICC, IHC-P, IHC-F, ELISA

Concentration: 200µg/mL

UOM: 100µg

[IMMUNOGEN INFORMATION]

Immunogen: Recombinant SIGLEC7 (Gly18~leu353) expressed in *E.coli*.

Accession No.: RPB789Hu01

Sequence: The target protein is fused with two N-terminal Tags, His-tag and S-tag and its sequence is listed below.

MHHHHHSSG LVPRGSGMKE TAAKFERQH MDSPDLGTDD DDKAMADIGS- GQK
SNRKDYSLTM QSSVTVQEGM CVHVRCFSY PVDSQTDSDP VHGYWFRAGN
DISWKAPVAT NNPAAVAVQEE TRDRFHLLGD PQTKNCTLSI RDARMSDAGR YFFRMEKGN
KWNKYDQLS VNVLTALHRP NILIPGTLES GCFQNLTCV PWACEQGTTP MISWMGTSVS
PLHPSTTRSS VLTLIPQPQH HGTSLTCQVT LPGAGVTTNR TIQLNVSYPY QNLTVTVFQG
EGTASTALGN SSSLSVLEGG SLRLVCAVDS NPPARLSWTW RSLTLYPSQP SNPLVLELQV
HLGDEGEFTC RAQNSLGSQH VSLNLSLQQE YTGKMRPVSG VLL

[ANTIBODY SPECIFICITY]

The antibody is a rabbit polyclonal antibody raised against SIGLEC7. It has been selected for its ability to recognize SIGLEC7 in immunohistochemical staining and western blotting.

[APPLICATIONS]

Western blotting: 1:100-400

Immunocytochemistry in formalin fixed cells: 1:100-500

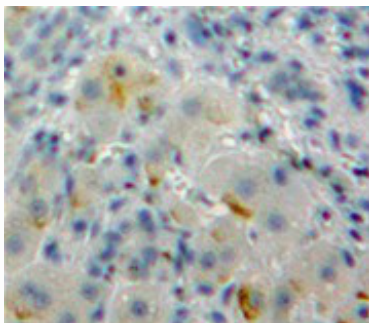
Immunohistochemistry in formalin fixed frozen section: 1:100-500

Immunohistochemistry in paraffin section: 1:50-200

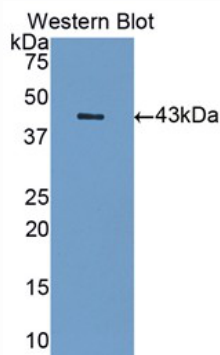
Enzyme-linked Immunosorbent Assay: 1:100-200

Optimal working dilutions must be determined by end user.

[**IMAGES**]



Used in DAB staining on formalin fixed
paraffin- embedded Liver tissue



Used in Western Blot ,Sample:
Recombinant SIGLEC7,Human

[**CONTENTS**]

Form & Buffer: Supplied as solution form in PBS, pH7.4, containing 0.02% NaN_3 , 50% glycerol.

[**QUALITY CONTROL**]

Content: The quality control contains recombinant SIGLEC7 (Gly18~leu353) disposed in loading buffer.

Usage: 10uL per well when 3,3'-Diaminobenzidine(DAB) as the substrate.
5uL per well when used in enhanced chemiluminescent (ECL).

Note: The quality control is specifically manufactured as the positive control. Not used for other purposes.

Loading Buffer: 100mM Tris(pH8.8), 2% SDS, 200mM NaCl, 50% glycerol, BPB 0.01%, NaN_3 0.02%.

[**STORAGE**]

Store at 4°C for frequent use. Stored at -20°C to -80°C in a manual defrost freezer for one year without detectable loss of activity. Avoid repeated freeze-thaw cycles.