



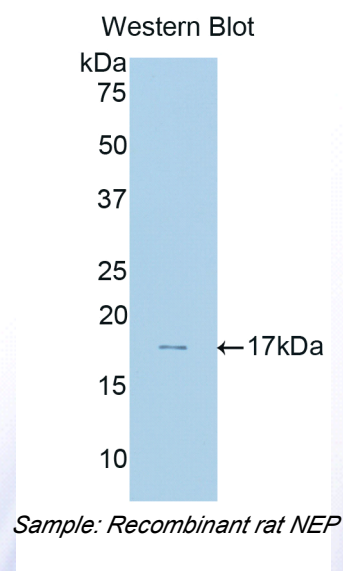
A91785Ra01
Polyclonal Antibody to Neprilysin (NEP)
Instruction manual

FOR IN VITRO USE AND RESEARCH USE ONLY
NOT FOR USE IN DIAGNOSTIC OR THERAPEUTIC PROCEDURES

4th Edition (Revised in September, 2012)

[PRODUCT INFORMATION]

Immunogen: NEP
Clonality: Polyclonal
Host: Rabbit
Species Reactivity: Rat
Ig type: Rabbit IgG
Purification: Antibodies are purified by target protein affinity chromatography.
Applications: WB, ICC, IHC-P, IHC-F
Form: Liquid
Size: 100µg



[IMMUNOGEN INFORMATION]

Immunogen: Recombinant rat NEP (Ser32~Ile164) expressed in *E.coli*.

Molecular Weight: 16.3 kDa

USCN accession No.: P91785Ra01

Sequence: The target protein is fused with N-terminal His-Tag and its sequence is listed below.

MGHHHHHSGSEF-SVLVLLLT IAVTMIALYA TYDDGICKSS DCIKSAARLI QNMDASAEPC TDFFKYACGG WLKRNVIPET
SSRYSNFDIL RDELEVILKD VLQEPKTEDI VAVQKAKTLY RSCINESAID SRGGQPLLTL LPDI



[ANTIBODY SPECIFICITY]

Anti NEP is a rabbit polyclonal antibody raised against rat NEP. This antibody has been selected for its ability to recognize rat NEP in immunohistochemical staining and western blotting, non cross-reactive with other members of the family.

[APPLICATIONS]

Western blotting: 1:100-400

Immunocytochemistry in formalin fixed cells: 1:100-500

Immunohistochemistry in formalin fixed frozen section: 1:100-500

Immunohistochemistry in paraffin section: 1:50-200

Optimal working dilutions must be determined by end user.

[CONTENTS]

Form & Buffer: Supplied as solution form in PBS, pH 7.4, containing 0.02%Na₃N, 50% glycerol.

[STORAGE]

Store at 4°C for frequent use. Stored at -20°C to -80°C in a manual defrost freezer for one year without detectable loss of activity. Avoid repeated freeze-thaw cycles.

