



A91760Hu01

Polyclonal Antibody to Regenerating Islet Derived Protein 1 Alpha (REG1a)

Instruction manual

FOR IN VITRO USE AND RESEARCH USE ONLY
NOT FOR USE IN DIAGNOSTIC OR THERAPEUTIC PROCEDURES

4th Edition (Revised in September, 2012)

[**PRODUCT INFORMATION**]

Immunogen: REG1a

Clonality: Polyclonal

Host: Rabbit

Species Reactivity: Human

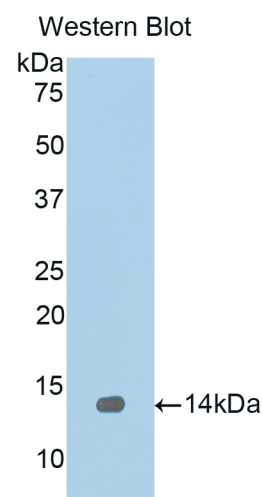
Ig type: Rabbit IgG

Purification: Antibodies are purified by target protein affinity chromatography.

Applications: WB, ICC, IHC-P, IHC-F

Form: Liquid

Size: 100µg



Sample: Recombinant human REG1a

[**IMMUNOGEN INFORMATION**]

Immunogen: Recombinant human REG1a (Arg33~Asn166) expressed in *E.coli*.

Molecular Weight: 12.6 kDa

USCN accession No.: P91760Hu01

Sequence: The target protein is fused with N-terminal His-Tag and its sequence is listed below.

MGHHHHHSGS-RISCPEGT NAYRSYCYF NEDRETWVDA DLYCQNMNSG NLVSVLTQAE GAFVASLIKE SGTDFFNVWI
GLHDPKKNRR WHWSSGSLVS YKSWGIGAPS SVNPGYCVSL TSSTGFQKWK DVPCEDKFSF VCKFKN



[ANTIBODY SPECIFICITY]

Anti REG1a is a rabbit polyclonal antibody raised against human REG1a. This antibody has been selected for its ability to recognize human REG1a in immunohistochemical staining and western blotting, non cross-reactive with other members of the family.

[APPLICATIONS]

Western blotting: 1:100-400

Immunocytochemistry in formalin fixed cells: 1:100-500

Immunohistochemistry in formalin fixed frozen section: 1:100-500

Immunohistochemistry in paraffin section: 1:50-200

Optimal working dilutions must be determined by end user.

[CONTENTS]

Form & Buffer: Supplied as solution form in PBS, pH 7.4, containing 0.02%Na₃N, 50% glycerol.

[STORAGE]

Store at 4°C for frequent use. Stored at -20°C to -80°C in a manual defrost freezer for one year without detectable loss of activity. Avoid repeated freeze-thaw cycles.

