

**PAB698Ra01**

**Polyclonal Antibody to Lactate Dehydrogenase B (LDHB)**

**Organism Species: Rattus norvegicus (Rat)**

**Instruction manual**

FOR IN VITRO USE AND RESEARCH USE ONLY

NOT FOR USE IN CLINICAL DIAGNOSTIC PROCEDURES

---

9th Edition (Revised in Jul, 2013)

## **[ PRODUCT INFORMATION ]**

**Immunogen:** LDHB, Rat

**Clonality:** Polyclonal

**Host:** Rabbit

**Immunoglobulin Type:** IgG

**Purification:** Affinity Chromatography.

**Applications:** WB, ICC, IHC-P, IHC-F, ELISA

**Concentration:** 200µg/mL

**UOM:** 100µg

## **[ IMMUNOGEN INFORMATION ]**

**Immunogen:** Recombinant LDHB (Met1~Leu334) expressed in *E.coli*.

**Accession No.:** RPB698Ra01

**Sequence:** The target protein is fused with N-terminal His-Tag and its sequence is listed below.

MGHHHHHHSG SEF-MATLKEKLI A PVADDETAVP NNKITVVG VG QVGMACAISI  
LGKSLADELA LVDVLEDK LK GEMMDLQHGS LFLQTPKIVA DKDYSVTANS KIVVVTAGVR  
QQEGESRLNL VQRNVNVFKF IIPQIVKYSP DCTIIVVSNP VDILTYVTWK LSGLPKHRVI  
GSGCNLDSAR FRYLMAEKL G IHPSSCHGWI LGEHGDSSVA VWSGVNVVAGV  
SLQELNPEMG TDNDSENWKE VHKMVVD SAY EVIKLKG YTN WAIGLSVADL IESMLKNLSR  
IHPVSTMVKG MYGIENEVFL SLPCILNARG LTSVINQK LK DDEVAQLRKS ADTLWDIQKD  
LKDL

## **[ ANTIBODY SPECIFICITY ]**

The antibody is a rabbit polyclonal antibody raised against LDHB. It has been selected for its ability to recognize LDHB in immunohistochemical staining and western blotting.

## **[ APPLICATIONS ]**

Western blotting: 1:100-400

Immunocytochemistry in formalin fixed cells: 1:100-500

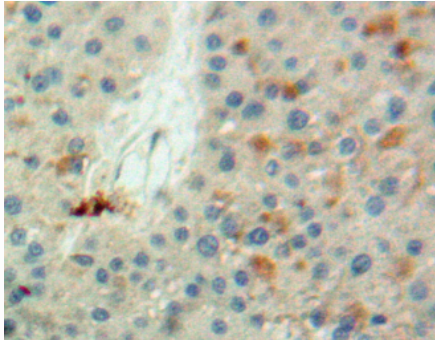
Immunohistochemistry in formalin fixed frozen section: 1:100-500

Immunohistochemistry in paraffin section: 1:50-200

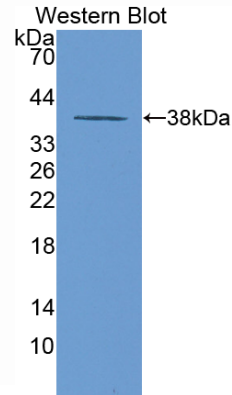
Enzyme-linked Immunosorbent Assay: 1:100-200

Optimal working dilutions must be determined by end user.

## [ **IMAGES** ]



Used in DAB staining on formalin fixed  
paraffin-embedded liver tissue



Used in Western Blot, Sample:  
Recombinant LDHB, Rat

## [ **CONTENTS** ]

**Form & Buffer:** Supplied as solution form in PBS, pH7.4, containing 0.02%  $\text{NaN}_3$ , 50% glycerol.

## [ **QUALITY CONTROL** ]

**Content:** The quality control contains recombinant LDHB (Met1~Leu334) disposed in loading buffer.

**Usage:** 10uL per well when 3,3'-Diaminobenzidine(DAB) as the substrate.  
5uL per well when used in enhanced chemiluminescent (ECL).

**Note:** The quality control is specifically manufactured as the positive control. Not used for other purposes.

**Loading Buffer:** 100mM Tris(pH8.8), 2% SDS, 200mM NaCl, 50% glycerol, BPB 0.01%,  $\text{NaN}_3$  0.02%.

## [ **STORAGE** ]

Store at 4°C for frequent use. Stored at -20°C to -80°C in a manual defrost freezer for one year without detectable loss of activity. Avoid repeated freeze-thaw cycles.